

Product datasheet for PH309761

VCAM1 (NM_001078) Human Mass Spec Standard

Product data:

Product Type:	Mass Spec Standards
Description:	VCAM1 MS Standard C13 and N15-labeled recombinant protein (NP_001069)
Species:	Human
Expression Host:	HEK293
Expression cDNA Clone or AA Sequence:	RC209761
Predicted MW:	81.3 kDa
Protein Sequence:	>RC209761 protein sequence Red=Cloning site Green=Tags(s)

MPGKMMVILGASNILWIMFAASQAFKIETTPESRYLAQIGDSVSLTCSTTGCEPFFSWRTQIDSPLNGK
VTNEGTTSTLTMNPVSFGNEHSYLCTATCESRKLEKGIQVEIYSFPKDPEIHLSGPLEAGKPITVKCSVA
DYYPFDRLEIDLLKGDHLMKSQEFLEDADRKSLETKSLEVTFTPVIEDIGKVLVCRAKLHIDEMDSVPTV
RQAVKELQVYISPKNTVISVNPSTKLQEGGSVTMTCSSEGLPAPEIFWSKKLDNGNLQHLSGNATLTLIA
MRMEDSGIYVCEGVNLIGKNRKEVELIVQEKPFVEISPGPRIAAQIGDSVMLTCSVMGCESPFSWRTQ
IDSPLSGKVRSEGTNSTLTLSPVSFENEHSYLCTVTCGHKKLEKGIQVELYSFPRDPEIEMSGGLVNGSS
VTVSCKVPSVYPLDRLEIELLKGETILENIEFLEDTDMKSLENKSLEMTFIPTIEDTGKALVCQAKLHID
DMEFEPKQRQSTQTLVYVAPRDTTVLVSPSSILEEGSSVNMTCLSQGFPAKILWSRQLPNGELQPLSE
NATLTLISTKMEDSGVYLCEGINQAGRSRKEVELIIQVTPKDIKLTAFPSSESVKEGDTVIIISCTCGNVPE
TWIILKKAETGDTVLSIDGAYTIRKAQLKDAGVYECESKNKVGSQRLSLTLDVQGRENNKDYFPELL
VLYFASLLIIPAIGMIIYFARKANMKGYSYLVEAQKSKV

TRTRPLEQKLISEEDLAANDILDYKDDDDKV

Tag:	C-Myc/DDK
Purity:	> 80% as determined by SDS-PAGE and Coomassie blue staining
Concentration:	>0.05 µg/µL as determined by microplate BCA method
Labeling Method:	Labeled with [U- ¹³ C ₆ , ¹⁵ N ₄]-L-Arginine and [U- ¹³ C ₆ , ¹⁵ N ₂]-L-Lysine
Buffer:	25 mM Tris-HCl, 100 mM glycine, pH 7.3
Storage:	Store at -80°C. Avoid repeated freeze-thaw cycles.
Stability:	Stable for 3 months from receipt of products under proper storage and handling conditions.
RefSeq:	NP_001069



[View online »](#)

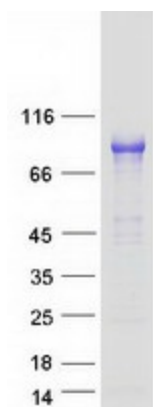
RefSeq Size:	3220
RefSeq ORF:	2217
Synonyms:	CD106; INCAM-100
Locus ID:	7412
UniProt ID:	P19320
Cytogenetics:	1p21.2

Summary: This gene is a member of the Ig superfamily and encodes a cell surface sialoglycoprotein expressed by cytokine-activated endothelium. This type I membrane protein mediates leukocyte-endothelial cell adhesion and signal transduction, and may play a role in the development of atherosclerosis and rheumatoid arthritis. Three alternatively spliced transcripts encoding different isoforms have been described for this gene. [provided by RefSeq, Dec 2010]

Protein Families: Druggable Genome, ES Cell Differentiation/IPS, Transmembrane

Protein Pathways: Cell adhesion molecules (CAMs), Leukocyte transendothelial migration

Product images:



Coomassie blue staining of purified VCAM1 protein (Cat# [TP309761]). The protein was produced from HEK293T cells transfected with VCAM1 cDNA clone (Cat# [RC209761]) using MegaTran 2.0 (Cat# [TT210002]).