

Product datasheet for PH309760

WEE1 (NM_003390) Human Mass Spec Standard

Product data:

Product Type:	Mass Spec Standards
Description:	WEE1 MS Standard C13 and N15-labeled recombinant protein (NP_003381)
Species:	Human
Expression Host:	HEK293
Expression cDNA Clone or AA Sequence:	RC209760
Predicted MW:	71.4 kDa
Protein Sequence:	>RC209760 representing NM_003390 Red=Cloning site Green=Tags(s)

MSFLSRQQPPRRRAGAACTLRQKLIFSPCSDCEEEEEEEEEEGSGHSTGEDSAFQEPDSPLPPARSPT
PGPERRRSPGPAPGSPGEEEDLLLPGACPGADEAGGAEGDSWEEEGFGSSSPVKSPAAPYFLGSSFSP
VRCGGPGDASPRGCGARRAGEGRRSPRDPHPTPPHKTRKLRFLDTPHTPKSLLSKARGIDSSSVKLRG
SSLFMDTEKSGKREFDVRQTPQVNIINPFTPDSLLLHSSGQCRRRKRTYWNDSGEGDMEASDYELEDETRP
AKRITITESNMKSRYTTEFHELEKIGSGEFGSVFKCVKRLDGCIIYAIKRSKKPLAGSVDEQNALREVVYAH
AVLGQHSVVVRYFSAWAEDDHMLIQNEYRNGGLADAISENYRIMSYFKEAELKDLLLQVGRGLRYIHSM
SLVHMDIKPSNIFISRTSIPNAASEEGDEDDWASNKVMFKIGDLGHVTRISSPQVEEGDSRFLANEVLQE
NYTHLPKADIFALALTVCAAGAEPLPRNGDQWHEIRQGRLPRIPQVLSQEFTELLKVMIHDPERRPSA
MALVKHSVLLSASRKSAEQLRIELNAEKFNKNSLLQKELKKAQMAKAAAEERALFTDRMATRSTTQSNRTS
RLIGKMNRSVSLTIY

TRTRPLEQKLI SEEDLAANDILDYKDDDDKV

Tag:	C-Myc/DDK
Purity:	> 80% as determined by SDS-PAGE and Coomassie blue staining
Concentration:	>0.05 µg/µL as determined by microplate BCA method
Labeling Method:	Labeled with [U- 13C6, 15N4]-L-Arginine and [U- 13C6, 15N2]-L-Lysine
Buffer:	25 mM Tris-HCl, 100 mM glycine, pH 7.3
Storage:	Store at -80°C. Avoid repeated freeze-thaw cycles.
Stability:	Stable for 3 months from receipt of products under proper storage and handling conditions.
RefSeq:	NP_003381
RefSeq Size:	4232



[View online »](#)

RefSeq ORF: 1938

Synonyms: WEE1A; WEE1hu

Locus ID: 7465

UniProt ID: [P30291](#), [Q86V29](#)

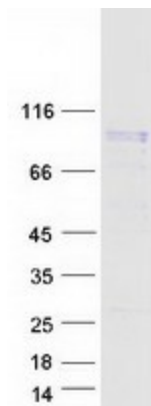
Cytogenetics: 11p15.4

Summary: This gene encodes a nuclear protein, which is a tyrosine kinase belonging to the Ser/Thr family of protein kinases. This protein catalyzes the inhibitory tyrosine phosphorylation of CDC2/cyclin B kinase, and appears to coordinate the transition between DNA replication and mitosis by protecting the nucleus from cytoplasmically activated CDC2 kinase. [provided by RefSeq, Jul 2008]

Protein Families: Druggable Genome, Protein Kinase, Stem cell - Pluripotency

Protein Pathways: Cell cycle

Product images:



Coomassie blue staining of purified WEE1 protein (Cat# [TP309760]). The protein was produced from HEK293T cells transfected with WEE1 cDNA clone (Cat# [RC209760]) using MegaTran 2.0 (Cat# [TT210002]).