

## Product datasheet for PH309740

### RAB26 (NM\_014353) Human Mass Spec Standard

#### Product data:

Product Type:	Mass Spec Standards
Description:	RAB26 MS Standard C13 and N15-labeled recombinant protein (NP_055168)
Species:	Human
Expression Host:	HEK293
Expression cDNA Clone or AA Sequence:	RC209740
Predicted MW:	27.9 kDa
Protein Sequence:	>RC209740 protein sequence Red=Cloning site Green=Tags(s)  MSRKKTPKSKGASTPAASTLPTANGARPARSGTALSGPDAPPNGPLQPGRPSLGGGVDFYDVAFKVMLVG DSGVGKTCLLVRFKDGAFIAGTIFISTVGIDFRNKVLDVDGVKVKLQMWDTAGQERFRSVTHAYYRDAHAL LLLVDVTNKASFDNIQAWLTEIHEYAQHDVALMLLGNKVDSAHERVVKREDGEKLAKEYGLPFMETS AKT GLNVDLAFTAIAKELKRSMKAPSEPRFRLHDYVVKREGRGASCCRP  TRTRPLEQKLI SEEDLAANDILDYKDDDDKV
Tag:	C-Myc/DDK
Purity:	> 80% as determined by SDS-PAGE and Coomassie blue staining
Concentration:	>0.05 µg/µL as determined by microplate BCA method
Labeling Method:	Labeled with [U- <sup>13</sup> C <sub>6</sub> , <sup>15</sup> N <sub>4</sub> ]-L-Arginine and [U- <sup>13</sup> C <sub>6</sub> , <sup>15</sup> N <sub>2</sub> ]-L-Lysine
Buffer:	25 mM Tris-HCl, 100 mM glycine, pH 7.3
Storage:	Store at -80°C. Avoid repeated freeze-thaw cycles.
Stability:	Stable for 3 months from receipt of products under proper storage and handling conditions.
RefSeq:	<a href="#">NP_055168</a>
RefSeq Size:	1641
RefSeq ORF:	768
Synonyms:	V46133
Locus ID:	25837
UniProt ID:	<a href="#">Q9ULW5</a>



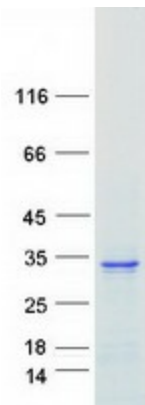
[View online »](#)

Cytogenetics: 16p13.3

**Summary:** Members of the RAB protein family, including RAB26, are important regulators of vesicular fusion and trafficking. The RAB family of small G proteins regulates intercellular vesicle trafficking, including exocytosis, endocytosis, and recycling (summary by Seki et al., 2000 [PubMed 11043516]).[supplied by OMIM, Nov 2010]

Protein Families: Druggable Genome

### Product images:



Coomassie blue staining of purified RAB26 protein (Cat# [TP309740]). The protein was produced from HEK293T cells transfected with RAB26 cDNA clone (Cat# [RC209740]) using MegaTran 2.0 (Cat# [TT210002]).