

Product datasheet for PH309738

Galectin 13 (LGALS13) (NM_013268) Human Mass Spec Standard

Product data:

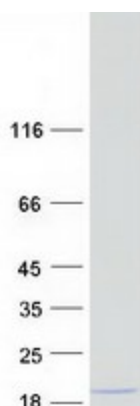
Product Type:	Mass Spec Standards
Description:	LGALS13 MS Standard C13 and N15-labeled recombinant protein (NP_037400)
Species:	Human
Expression Host:	HEK293
Expression cDNA Clone or AA Sequence:	RC209738
Predicted MW:	16.1 kDa
Protein Sequence:	>RC209738 protein sequence Red=Cloning site Green=Tags(s) MSSLPVYPYKLPVSLSVGSCVVIKGTPIHSFINDPQLQVDFYTDMEDESDIAFRFRVHFGNHVVMNRREFG IWMLEETTDYVPFEDGKQFELCIYVHYNEYEIKVNGIRIYGFVHRIPPSFVKMVQVSRDISLTSVCVCN TRTRPLEQKLISEEDLAANDILDYKDDDDKV
Tag:	C-Myc/DDK
Purity:	> 80% as determined by SDS-PAGE and Coomassie blue staining
Concentration:	>0.05 µg/µL as determined by microplate BCA method
Labeling Method:	Labeled with [U- 13C6, 15N4]-L-Arginine and [U- 13C6, 15N2]-L-Lysine
Buffer:	25 mM Tris-HCl, 100 mM glycine, pH 7.3
Storage:	Store at -80°C. Avoid repeated freeze-thaw cycles.
Stability:	Stable for 3 months from receipt of products under proper storage and handling conditions.
RefSeq:	NP_037400
RefSeq Size:	610
RefSeq ORF:	417
Synonyms:	GAL13; PLAC8; PP13
Locus ID:	29124
UniProt ID:	Q9UHV8
Cytogenetics:	19q13.2



[View online »](#)

Summary:

Lysophospholipases are enzymes that act on biological membranes to regulate the multifunctional lysophospholipids. The protein encoded by this gene has lysophospholipase activity. It is composed of two identical subunits which are held together by disulfide bonds. This protein has structural similarity to several members of the beta-galactoside-binding S-type lectin family. [provided by RefSeq, Jul 2008]

Product images:

Coomassie blue staining of purified LGALS13 protein (Cat# [TP309738]). The protein was produced from HEK293T cells transfected with LGALS13 cDNA clone (Cat# [RC209738]) using MegaTran 2.0 (Cat# [TT210002]).