

Product datasheet for PH309724

Cytochrome C (CYCS) (NM_018947) Human Mass Spec Standard

Product data:

Product Type:	Mass Spec Standards
Description:	CYCS MS Standard C13 and N15-labeled recombinant protein (NP_061820)
Species:	Human
Expression Host:	HEK293
Expression cDNA Clone or AA Sequence:	RC209724
Predicted MW:	11.8 kDa
Protein Sequence:	>RC209724 protein sequence Red =Cloning site Green =Tags(s) MGDVEKGKKIFIMKCSQCHTVEKGGKHKTGPNLHGLFGRKIGQAPGYSYTAANKNKGIIWGEDTLMEYLE NPKKYIPGTKMIFVGIKKKEERADLIAYLKATNE TRTRPLEQKLISEEDLAANDILDYKDDDDKV
Tag:	C-Myc/DDK
Purity:	> 80% as determined by SDS-PAGE and Coomassie blue staining
Concentration:	>0.05 µg/µL as determined by microplate BCA method
Labeling Method:	Labeled with [U- 13C6, 15N4]-L-Arginine and [U- 13C6, 15N2]-L-Lysine
Buffer:	25 mM Tris-HCl, 100 mM glycine, pH 7.3
Storage:	Store at -80°C. Avoid repeated freeze-thaw cycles.
Stability:	Stable for 3 months from receipt of products under proper storage and handling conditions.
RefSeq:	NP_061820
RefSeq Size:	5544
RefSeq ORF:	315
Synonyms:	CYC; HCS; THC4
Locus ID:	54205
UniProt ID:	P99999 , G4XXL9
Cytogenetics:	7p15.3



[View online »](#)

Summary:

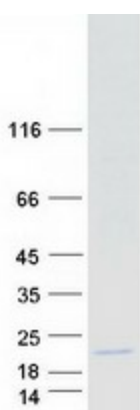
This gene encodes a small heme protein that functions as a central component of the electron transport chain in mitochondria. The encoded protein associates with the inner membrane of the mitochondrion where it accepts electrons from cytochrome b and transfers them to the cytochrome oxidase complex. This protein is also involved in initiation of apoptosis. Mutations in this gene are associated with autosomal dominant nonsyndromic thrombocytopenia. Numerous processed pseudogenes of this gene are found throughout the human genome.[provided by RefSeq, Jul 2010]

Protein Families:

Druggable Genome

Protein Pathways:

Alzheimer's disease, Amyotrophic lateral sclerosis (ALS), Apoptosis, Colorectal cancer, Huntington's disease, p53 signaling pathway, Parkinson's disease, Pathways in cancer, Small cell lung cancer, Viral myocarditis

Product images:

Coomassie blue staining of purified CYCS protein (Cat# [TP309724]). The protein was produced from HEK293T cells transfected with CYCS cDNA clone (Cat# [RC209724]) using MegaTran 2.0 (Cat# [TT210002]).