

## Product datasheet for PH309709

### CLEC1 (CLEC1A) (NM\_016511) Human Mass Spec Standard

#### Product data:

Product Type:	Mass Spec Standards
Description:	CLEC1A MS Standard C13 and N15-labeled recombinant protein (NP_057595)
Species:	Human
Expression Host:	HEK293
Expression cDNA Clone or AA Sequence:	RC209709
Predicted MW:	32 kDa
Protein Sequence:	>RC209709 protein sequence <span style="color: red;">Red</span> =Cloning site <span style="color: green;">Green</span> =Tags(s)

MQAKYSSTRDMLDDGDTTMSLHSQASATTRHPEPRRTEHRAPSSTWRPVALTLLTLCLVLLIGLAALGL  
 LFFQYYQLSNTGQDTISQMEERLGNTSQELQSLQVQNIKLAGSLQHVAEKLCRELYNKAGAHRCSPCTEQ  
 WKWHGDNCYQFYKDSKSWEDCKYFCLSENSTMLKINKQEDLEFAASQSYSEFFYSYWTGLLRPDSGKAWL  
 WMDGTPFTSELFHIIIDVTSPRSRDCVAILNGMIFSKDCKELKRCVCERRAGMVKPESLHVPPETLGECD

TRTRPLEQKLISEEDLAANDILDYKDDDDKV

Tag:	C-Myc/DDK
Purity:	> 80% as determined by SDS-PAGE and Coomassie blue staining
Concentration:	>0.05 µg/µL as determined by microplate BCA method
Labeling Method:	Labeled with [U- <sup>13</sup> C <sub>6</sub> , <sup>15</sup> N <sub>4</sub> ]-L-Arginine and [U- <sup>13</sup> C <sub>6</sub> , <sup>15</sup> N <sub>2</sub> ]-L-Lysine
Buffer:	25 mM Tris-HCl, 100 mM glycine, pH 7.3
Storage:	Store at -80°C. Avoid repeated freeze-thaw cycles.
Stability:	Stable for 3 months from receipt of products under proper storage and handling conditions.
RefSeq:	<a href="#">NP_057595</a>
RefSeq Size:	2781
RefSeq ORF:	840
Synonyms:	CLEC-1; CLEC1
Locus ID:	51267
UniProt ID:	<a href="#">Q8NC01</a>

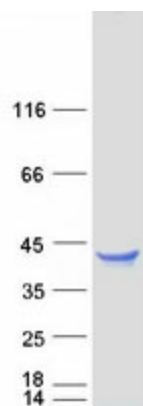

[View online »](#)

**Cytogenetics:** 12p13.2

**Summary:** This gene encodes a member of the C-type lectin/C-type lectin-like domain (CTL/CTLD) superfamily. Members of this family share a common protein fold and have diverse functions, such as cell adhesion, cell-cell signaling, glycoprotein turnover, and roles in inflammation and immune response. The encoded protein may play a role in regulating dendritic cell function. This gene is closely linked to other CTL/CTLD superfamily members on chromosome 12p13 in the natural killer gene complex region. Alternative splicing results in multiple transcript variants. [provided by RefSeq, Jul 2014]

**Protein Families:** Druggable Genome, Transmembrane

### Product images:



Coomassie blue staining of purified CLEC1A protein (Cat# [TP309709]). The protein was produced from HEK293T cells transfected with CLEC1A cDNA clone (Cat# [RC209709]) using MegaTran 2.0 (Cat# [TT210002]).