

## Product datasheet for PH309697

### EEF1A1 (NM\_001402) Human Mass Spec Standard

#### Product data:

Product Type:	Mass Spec Standards
Description:	EEF1A1 MS Standard C13 and N15-labeled recombinant protein (NP_001393)
Species:	Human
Expression Host:	HEK293
Expression cDNA Clone or AA Sequence:	RC209697
Predicted MW:	50.1 kDa
Protein Sequence:	>RC209697 protein sequence Red=Cloning site Green=Tags(s)

MGKEKTHINIVVIGHVDSGKSTTTGHLIYKCGGIDKRTIEKFEKEAAEMGKGSFKYAWVLDKKAERERG  
ITIDISLWKWFETSKYYVTIIDAPGHRDFIKNMITGTSQADCAVLIVAAGVGEFEAGISKNGQTRHALLA  
YTLGVKQLIVGVNKMDSTEPYSQKRYEEIVKEVSTYIKKIGYNPDTVAFVPIISGWNNDNMLEPSANMPW  
FKGWKVRKDGNASGTTLLEALDCILPPTRPDKPLRLPLQDVYKIGGIGTVPVGRVETGVLKPGMVVTF  
APVNVTTVEKSVEMHHEALSEALPGDNVGFNVKNVSVKDVRRGNVAGDSKNDPPMEAGFTAQVIILNHP  
GQISAGYAPVLDCHTAHIACKFAELKEKIDRRSGKKLEDGPKFLKSGDAAIVDMVPGKPMCVESFSDYPP  
LGRFAVRDMRQTVAVGVIAVDKKAAGAGKVTKSAQKAQKAK

TRTRPLEQKLISEEDLAANDILDYKDDDDKV

Tag:	C-Myc/DDK
Purity:	> 80% as determined by SDS-PAGE and Coomassie blue staining
Concentration:	>0.05 µg/µL as determined by microplate BCA method
Labeling Method:	Labeled with [U- <sup>13</sup> C <sub>6</sub> , <sup>15</sup> N <sub>4</sub> ]-L-Arginine and [U- <sup>13</sup> C <sub>6</sub> , <sup>15</sup> N <sub>2</sub> ]-L-Lysine
Buffer:	25 mM Tris-HCl, 100 mM glycine, pH 7.3
Storage:	Store at -80°C. Avoid repeated freeze-thaw cycles.
Stability:	Stable for 3 months from receipt of products under proper storage and handling conditions.
RefSeq:	<u>NP_001393</u>
RefSeq Size:	3528
RefSeq ORF:	1386
Synonyms:	CCS-3; CCS3; EE1A1; EEF-1; EEF1A; eEF1A-1; EF-Tu; EF1A; GRAF-1EF; LENG7; PTI1



[View online »](#)

Locus ID: 1915

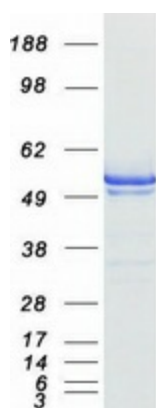
UniProt ID: [P68104](#), [Q6IPS9](#)

Cytogenetics: 6q13

**Summary:** This gene encodes an isoform of the alpha subunit of the elongation factor-1 complex, which is responsible for the enzymatic delivery of aminoacyl tRNAs to the ribosome. This isoform (alpha 1) is expressed in brain, placenta, lung, liver, kidney, and pancreas, and the other isoform (alpha 2) is expressed in brain, heart and skeletal muscle. This isoform is identified as an autoantigen in 66% of patients with Felty syndrome. This gene has been found to have multiple copies on many chromosomes, some of which, if not all, represent different pseudogenes. [provided by RefSeq, Jul 2008]

**Protein Families:** Druggable Genome

### Product images:



Coomassie blue staining of purified EEF1A1 protein (Cat# [TP309697]). The protein was produced from HEK293T cells transfected with EEF1A1 cDNA clone (Cat# [RC209697]) using MegaTran 2.0 (Cat# [TT210002]).