

## Product datasheet for PH309683

### Grainyhead like protein 1 homolog (GRHL1) (NM\_014552) Human Mass Spec Standard

#### Product data:

Product Type:	Mass Spec Standards
Description:	GRHL1 MS Standard C13 and N15-labeled recombinant protein (NP_055367)
Species:	Human
Expression Host:	HEK293
Expression cDNA Clone or AA Sequence:	RC209683
Predicted MW:	70.1 kDa
Protein Sequence:	>RC209683 protein sequence Red=Cloning site Green=Tags(s)

MTQEYDNKRPVLLVQNEALYPQRRSYTSEDEAWKSFLENPLTAATKAMMSINGDEDSAAALGLLYDYKVP  
PRERRSSTAKPEVEHPEPDHRSKRNIPVIVTEQPLISAGENRVQVLKNVFPNIVLPHGNQLGIDKRGHLTA  
PDTTIVTSIATMPTHSIKTETQPHGFAVGIPPAVYHPEPTERVVVFDRNLNTDQFSSGAQAPNAQRRTPD  
STFSETFKEGVQEVFFPSDLRLMPGMNSEDYVFDVSGNNEFYTLASKSLRQKPGDSTMTYLNKGQFY  
PITLKEVSSSEGIHHPISKVRSVIMVVF AEDKSREDQLRHWKYWHSRQHTAKQRCIDIADYKESFNTISN  
VEEIAYN AISFTWDINDEAKVVISVNCLESTDFSSQKGVKGLPLNIQIDTYSYNNRSNPKVHRAYCQIKVF  
CDKGAERKIRDEERKQSKRKVSDVKVPLLP SHKRM DITVFKPFIDLDTQPVLFI PDVHFANLQRGTHVLP  
IASEELEGE GSVLKRGPYGTEDDFAVPPSTKLARIEEPKRVLLYVRKESEEVFDALMLKTPSLKGLMEAI  
SDKYDVP HDKIGKIFKCKKGILVMDDNIVKHYSNEDTFQLQIEEAGGSYKLTLEI

TRTRPLEQKLI SEEDLAANDILDYKDDDDKV

Tag:	C-Myc/DDK
Purity:	> 80% as determined by SDS-PAGE and Coomassie blue staining
Concentration:	>0.05 µg/µL as determined by microplate BCA method
Labeling Method:	Labeled with [U- <sup>13</sup> C <sub>6</sub> , <sup>15</sup> N <sub>4</sub> ]-L-Arginine and [U- <sup>13</sup> C <sub>6</sub> , <sup>15</sup> N <sub>2</sub> ]-L-Lysine
Buffer:	25 mM Tris-HCl, 100 mM glycine, pH 7.3
Storage:	Store at -80°C. Avoid repeated freeze-thaw cycles.
Stability:	Stable for 3 months from receipt of products under proper storage and handling conditions.
RefSeq:	<a href="#">NP_055367</a>
RefSeq Size:	3610
RefSeq ORF:	1854



[View online »](#)

**Synonyms:** grainyhead-like 1 (Drosophila); LBP-32; LBP32; LBP protein 32; leader-binding protein 32; mammalian grainyhead; MGR; TF2CP2L2; transcription factor CP2-like 2

**Locus ID:** 29841

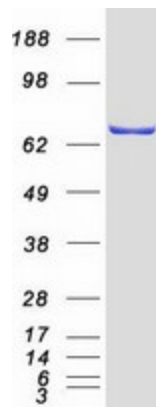
**UniProt ID:** [Q9NZI5](#)

**Cytogenetics:** 2p25.1

**Summary:** This gene encodes a member of the grainyhead family of transcription factors. The encoded protein can exist as a homodimer or can form heterodimers with sister-of-mammalian grainyhead or brother-of-mammalian grainyhead. This protein functions as a transcription factor during development. [provided by RefSeq, Jun 2009]

**Protein Families:** Transcription Factors, Transmembrane

### Product images:



Coomassie blue staining of purified GRHL1 protein (Cat# [TP309683]). The protein was produced from HEK293T cells transfected with GRHL1 cDNA clone (Cat# [RC209683]) using MegaTran 2.0 (Cat# [TT210002]).