

## Product datasheet for PH309679

### IL12B (NM\_002187) Human Mass Spec Standard

#### Product data:

Product Type:	Mass Spec Standards
Description:	IL12B MS Standard C13 and N15-labeled recombinant protein (NP_002178)
Species:	Human
Expression Host:	HEK293
Expression cDNA Clone or AA Sequence:	RC209679
Predicted MW:	37.2 kDa
Protein Sequence:	>RC209679 protein sequence Red=Cloning site Green=Tags(s)  MCHQQLVISWFLVFLASPLVAIWELKKDYYVVELDWYPDAPGEMVVLTCDTPEEDGITWTLDQSSEVLG SGKTLTIQVKEFGDAGQYTCHKGGEVLSHLLLLHKKEDGIWSTDILKDQKEPKNKTFLRCEAKNYSGRF TCWWLTTISTDLTFSVKSSRGSSDPQGVTCGAATLSAERVGRDNKEYEYSVECQEDSACPAEESLPIEV MVDVAVHKLKYENYTSSFFIRDIIKPPKPNLQLKPLKNSRQVEVSWEYPTWSTPHSYFSLTFCVQVQGK SKREKKDRVFTDKTSATVICRKNASISVRAQDRYSSSWSEWASVPCS  TRTRPLEQKLI SEEDLAANDILDYKDDDDKV
Tag:	C-Myc/DDK
Purity:	> 80% as determined by SDS-PAGE and Coomassie blue staining
Concentration:	>0.05 µg/µL as determined by microplate BCA method
Labeling Method:	Labeled with [U- <sup>13</sup> C <sub>6</sub> , <sup>15</sup> N <sub>4</sub> ]-L-Arginine and [U- <sup>13</sup> C <sub>6</sub> , <sup>15</sup> N <sub>2</sub> ]-L-Lysine
Buffer:	25 mM Tris-HCl, 100 mM glycine, pH 7.3
Storage:	Store at -80°C. Avoid repeated freeze-thaw cycles.
Stability:	Stable for 3 months from receipt of products under proper storage and handling conditions.
RefSeq:	<a href="#">NP_002178</a>
RefSeq Size:	2347
RefSeq ORF:	984
Synonyms:	CLMF; CLMF2; IL-12B; IMD28; IMD29; NKSF; NKSF2
Locus ID:	3593



[View online »](#)

UniProt ID: [P29460](#)

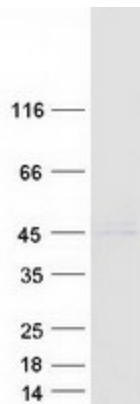
Cytogenetics: 5q33.3

**Summary:** This gene encodes a subunit of interleukin 12, a cytokine that acts on T and natural killer cells, and has a broad array of biological activities. Interleukin 12 is a disulfide-linked heterodimer composed of the 40 kD cytokine receptor like subunit encoded by this gene, and a 35 kD subunit encoded by IL12A. This cytokine is expressed by activated macrophages that serve as an essential inducer of Th1 cells development. This cytokine has been found to be important for sustaining a sufficient number of memory/effector Th1 cells to mediate long-term protection to an intracellular pathogen. Overexpression of this gene was observed in the central nervous system of patients with multiple sclerosis (MS), suggesting a role of this cytokine in the pathogenesis of the disease. The promoter polymorphism of this gene has been reported to be associated with the severity of atopic and non-atopic asthma in children. [provided by RefSeq, Jul 2008]

**Protein Families:** Druggable Genome, Secreted Protein, Transmembrane

**Protein Pathways:** Allograft rejection, Cytokine-cytokine receptor interaction, Jak-STAT signaling pathway, RIG-I-like receptor signaling pathway, Toll-like receptor signaling pathway, Type I diabetes mellitus

### Product images:



Coomassie blue staining of purified IL12B protein (Cat# [TP309679]). The protein was produced from HEK293T cells transfected with IL12B cDNA clone (Cat# [RC209679]) using MegaTran 2.0 (Cat# [TT210002]).