

## Product datasheet for PH309662

### Meis homeobox 3 (MEIS3) (NM\_001009813) Human Mass Spec Standard

#### Product data:

Product Type:	Mass Spec Standards
Description:	MEIS3 MS Standard C13 and N15-labeled recombinant protein (NP_001009813)
Species:	Human
Expression Host:	HEK293
Expression cDNA Clone or AA Sequence:	RC209662
Predicted MW:	39.1 kDa
Protein Sequence:	>RC209662 protein sequence Red=Cloning site Green=Tags(s)
	MARRYDELPHYPGIVDGPAAALASFPETVPAVPGPYGPHRPPQPLPPGLSDGLKREKDEIYGHPLFPLLA LVFEKCELATCSPRDGAGAGLGTTPPGGDVCSDFSFNEDIAAFQVRSERPLFSSNPELDNLMIQAIQVL RFHLLLELEKGMPIDLVIEDRDGGCREDFEDYPASCPSLPDQNNMWIRDHEDSGSVHLGTPGPSSGGLAS QSGDNSSDQGDGLDTSVSPSSGGEDLDQERRRNRKRGIFPKVATNIMRAWLFQHL SHYPSEEKQKQ LAQDTGLTILQVNNWFINARRRIVQPMIDQSNRTGQGAASFPEGQPIGGYTETQPHVAVRPPGSGVMSLN LEGEWHYL
	TRTRPLEQKLI SEEDLAANDILDYKDDDDKV
Tag:	C-Myc/DDK
Purity:	> 80% as determined by SDS-PAGE and Coomassie blue staining
Concentration:	>0.05 µg/µL as determined by microplate BCA method
Labeling Method:	Labeled with [U- <sup>13</sup> C <sub>6</sub> , <sup>15</sup> N <sub>4</sub> ]-L-Arginine and [U- <sup>13</sup> C <sub>6</sub> , <sup>15</sup> N <sub>2</sub> ]-L-Lysine
Buffer:	25 mM Tris-HCl, 100 mM glycine, pH 7.3
Storage:	Store at -80°C. Avoid repeated freeze-thaw cycles.
Stability:	Stable for 3 months from receipt of products under proper storage and handling conditions.
RefSeq:	<u>NP_001009813</u>
RefSeq Size:	1977
RefSeq ORF:	1074
Synonyms:	MRG2
Locus ID:	56917



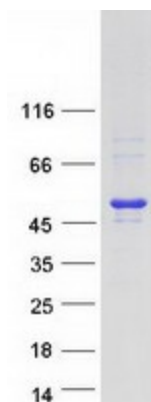
[View online »](#)

UniProt ID: [Q99687](#), [A0A024R0S2](#)

Cytogenetics: 19q13.32

Summary: This gene encodes a homeobox protein and probable transcriptional regulator. The orthologous protein in mouse controls expression of 3-phosphoinositide dependent protein kinase 1, which promotes survival of pancreatic beta-cells. [provided by RefSeq, Sep 2016]

### Product images:



Coomassie blue staining of purified MEIS3 protein (Cat# [TP309662]). The protein was produced from HEK293T cells transfected with MEIS3 cDNA clone (Cat# [RC209662]) using MegaTran 2.0 (Cat# [TT210002]).