

Product datasheet for PH309630

TRIM11 (NM_145214) Human Mass Spec Standard

Product data:

Product Type:	Mass Spec Standards
Description:	TRIM11 MS Standard C13 and N15-labeled recombinant protein (NP_660215)
Species:	Human
Expression Host:	HEK293
Expression cDNA Clone or AA Sequence:	RC209630
Predicted MW:	52.8 kDa
Protein Sequence:	>RC209630 protein sequence Red=Cloning site Green=Tags(s)

MAAPDLSTNLQEEATCAICLDYFTDPVMTDCGHNFCRECI RRCWGPQEGPYACPECRELSPQRNLRPNRP
LAKMAEMARRLHPPSPVQGVCPAHREPLAAFCGDELRLCAACERSGEHWHRVRLQDAEDLKAKLE
KSLEHLRKQMQDALLFQAQADETCVLWQKMVESQRQNVLGEFERLRRLLAEEEEQQLLQRLEEEELVLP
LREGAAHLGQQAHLAELIAELEGRCLPALGLLQDIKDALRRVQDVKLQPPEVVPMEVRTVCRVPLVE
TLRRFRGDVTLDPDTANPELILSEDRRSVQRGDLRQALPDSPERFDPGPCVLGQERFTSGRHYWEVEVD
RTSWALGVCRENVRKEGEL SAGNGFWILVFLGSYYNSSERALAPLRDPPRRVGI FL DYEAGHLSFYSA
TDGSLLFIFPEIPFSGTLRPLFSPLSSSPTMTICRPKGGSGDTLAPQ

SGPTRTRPLEQKLI SEEDLAANDILDYKDDDDKV

Tag:	C-Myc/DDK
Purity:	> 80% as determined by SDS-PAGE and Coomassie blue staining
Concentration:	>0.05 µg/µL as determined by microplate BCA method
Labeling Method:	Labeled with [U- ¹³ C ₆ , ¹⁵ N ₄]-L-Arginine and [U- ¹³ C ₆ , ¹⁵ N ₂]-L-Lysine
Buffer:	25 mM Tris-HCl, 100 mM glycine, pH 7.3
Storage:	Store at -80°C. Avoid repeated freeze-thaw cycles.
Stability:	Stable for 3 months from receipt of products under proper storage and handling conditions.
RefSeq:	<u>NP_660215</u>
RefSeq Size:	2715
RefSeq ORF:	1404
Synonyms:	BIA1; RNF92



[View online »](#)

Locus ID: 81559

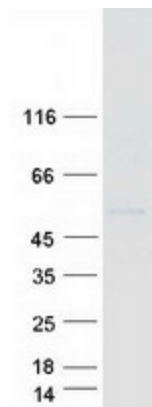
UniProt ID: [Q96F44](#)

Cytogenetics: 1q42.13

Summary: The protein encoded by this gene is a member of the tripartite motif (TRIM) family. The TRIM motif includes three zinc-binding domains, a RING, a B-box type 1 and a B-box type 2, and a coiled-coil region. This protein localizes to the nucleus and the cytoplasm. Its function has not been identified. [provided by RefSeq, Jul 2008]

Protein Families: Druggable Genome

Product images:



Coomassie blue staining of purified TRIM11 protein (Cat# [TP309630]). The protein was produced from HEK293T cells transfected with TRIM11 cDNA clone (Cat# [RC209630]) using MegaTran 2.0 (Cat# [TT210002]).