

Product datasheet for PH309615

REEP1 (NM_022912) Human Mass Spec Standard

Product data:

Product Type:	Mass Spec Standards
Description:	REEP1 MS Standard C13 and N15-labeled recombinant protein (NP_075063)
Species:	Human
Expression Host:	HEK293
Expression cDNA Clone or AA Sequence:	RC209615
Predicted MW:	22.3 kDa
Protein Sequence:	>RC209615 protein sequence Red=Cloning site Green=Tags(s) MYSWIIISRLVVLIFGTLYPAYYSYKAVKSKDIKEYVKWMMYWIIFALFTTAETFTDIFLCWFPFYELKI AFVAWLLSPYTKGSSLLYRKFVHPTLSSKEKEIDDCLVQAKDRSYDALVHFGKRGLNVAATAAVMAASKG QGALSERLRSFSMQDLTIRGDGAPAPSGPPPPGSRASGKHGQPKMSRSASESASSSGTA TRTRPLEQKLISEEDLAANDILDYKDDDDKV
Tag:	C-Myc/DDK
Purity:	> 80% as determined by SDS-PAGE and Coomassie blue staining
Concentration:	>0.05 µg/µL as determined by microplate BCA method
Labeling Method:	Labeled with [U- 13C6, 15N4]-L-Arginine and [U- 13C6, 15N2]-L-Lysine
Buffer:	25 mM Tris-HCl, 100 mM glycine, pH 7.3
Storage:	Store at -80°C. Avoid repeated freeze-thaw cycles.
Stability:	Stable for 3 months from receipt of products under proper storage and handling conditions.
RefSeq:	NP_075063
RefSeq Size:	3868
RefSeq ORF:	603
Synonyms:	C2orf23; HMN5B; SPG31; Yip2a
Locus ID:	65055
UniProt ID:	Q9H902



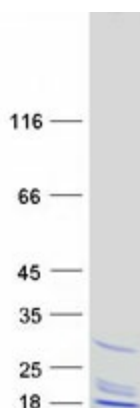
[View online »](#)

Cytogenetics: 2p11.2

Summary: This gene encodes a mitochondrial protein that functions to enhance the cell surface expression of odorant receptors. Mutations in this gene cause spastic paraplegia autosomal dominant type 31, a neurodegenerative disorder. Alternative splicing results in multiple transcript variants. [provided by RefSeq, Sep 2009]

Protein Families: Druggable Genome, Transmembrane

Product images:



Coomassie blue staining of purified REEP1 protein (Cat# [TP309615]). The protein was produced from HEK293T cells transfected with REEP1 cDNA clone (Cat# [RC209615]) using MegaTran 2.0 (Cat# [TT210002]).