

## Product datasheet for PH309573

### DNase II (DNASE2) (NM\_001375) Human Mass Spec Standard

#### Product data:

Product Type:	Mass Spec Standards
Description:	DNASE2 MS Standard C13 and N15-labeled recombinant protein (NP_001366)
Species:	Human
Expression Host:	HEK293
Expression cDNA Clone or AA Sequence:	RC209573
Predicted MW:	39.6 kDa
Protein Sequence:	>RC209573 protein sequence Red=Cloning site Green=Tags(s)
	MIPLLLAALLCVPAGALTCYGDGSGQPVDWVYKLPALRGSGEAAQRGLQYKYLDESSGGWRDGRALINS PEGAVGRSLQPLYRSNTSQLAFLLYNDQPPQPSKAQDSSMRGHTKGVLLLDHDGGFWLVHVPNFPPAS SAAYSWPHSACTYGTLLCVSFPFAQFSKMGKQLTYTYPWVYNYQLEGIFAQEFDPDENYVKGHHVSQEP WNSSITLTSQAGAVFQSFQSKFGDDL YSGWLAALGTNLQVQFVHKTVGILPSNCSDIWQVLNVNQIA FPGPAGPSFNSTEDHSKWCVSPKGPWTCVGDMMNRNQEEQRGGGTCAQLPALWKAQPLVKNYQPCNGM ARKPSRAYKI
	TRTRPLEQKLI SEEDLAANDILDYKDDDDKV
Tag:	C-Myc/DDK
Purity:	> 80% as determined by SDS-PAGE and Coomassie blue staining
Concentration:	>0.05 µg/µL as determined by microplate BCA method
Labeling Method:	Labeled with [U- <sup>13</sup> C <sub>6</sub> , <sup>15</sup> N <sub>4</sub> ]-L-Arginine and [U- <sup>13</sup> C <sub>6</sub> , <sup>15</sup> N <sub>2</sub> ]-L-Lysine
Buffer:	25 mM Tris-HCl, 100 mM glycine, pH 7.3
Storage:	Store at -80°C. Avoid repeated freeze-thaw cycles.
Stability:	Stable for 3 months from receipt of products under proper storage and handling conditions.
RefSeq:	<a href="#">NP_001366</a>
RefSeq Size:	2011
RefSeq ORF:	1080
Synonyms:	DNASE2A; DNL; DNL2
Locus ID:	1777



[View online »](#)

UniProt ID: [O00115](#), [A0A024R7F4](#)

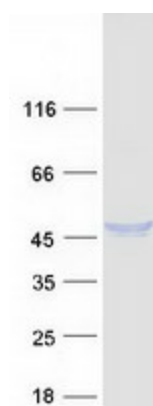
Cytogenetics: 19p13.13

Summary: This gene encodes a member of the DNase family. The protein, located in the lysosome, hydrolyzes DNA under acidic conditions and mediates the breakdown of DNA during erythropoiesis and apoptosis. Two codominant alleles have been characterized, DNASE2\*L (low activity) and DNASE2\*H (high activity), that differ at one nucleotide in the promoter region. The DNASE2\*H allele is represented in this record. [provided by RefSeq, Jul 2008]

Protein Families: Druggable Genome

Protein Pathways: Lysosome

### Product images:



Coomassie blue staining of purified DNASE2 protein (Cat# [TP309573]). The protein was produced from HEK293T cells transfected with DNASE2 cDNA clone (Cat# [RC209573]) using MegaTran 2.0 (Cat# [TT210002]).