

## Product datasheet for PH309559

### LLGL2 (NM\_001031803) Human Mass Spec Standard

#### Product data:

Product Type:	Mass Spec Standards
Description:	LLGL2 MS Standard C13 and N15-labeled recombinant protein (NP_001026973)
Species:	Human
Expression Host:	HEK293
Expression cDNA Clone or AA Sequence:	RC209559
Predicted MW:	113.4 kDa
Protein Sequence:	>RC209559 protein sequence Red=Cloning site Green=Tags(s)

MRRFLRPGHDPVRELRKRDLFQFNKTVEHGFPHQPSALGYSPSLRILAIIGTRSGAIKLYGAPGVFEMGLH  
QENNAVQIHLPLPGQCQLVTLDDNSLHLWSLKVKGASELQEDESFTLRGPPGAAPSATQITVVLPHSS  
CELLYLGTESGNVVFVQLPAFRALEDRTISSDAVLQRLPEEARHRRVFEMVEALQEHPDRPNQILIGYSR  
GLVVIWDLQGSRYLYHFLSSQQLENIWWQRDGRLLVSCHSDGSYCQWPVSSEAAQPEPLRSLVPYGFPPC  
KAITRILWLTTRQGLPFTIFQGGMPRASVYGRHCSVSIHDGQQTAFDFTSRVIGFTVLTEADPAATFDDP  
YALVVLAEELVVIDLQTAGWPPVQLPYLASHCSAITCSHHVSNIPKLERIIAAGSRQNAHFSTMEW  
PIDGGTSLTPAPPQRDLTLGHEDGTVRFWDASGVCLRLLYKLSVVRVFLTDTDPNENLSAQGEDEWPLL  
RKVGSFDPYSDDPRLGIQKIFLCKYSGYLAAGTAVAGQVLELNDEAAEQAVEQVEADLLQDQEGYRWKG  
HERLAARSGPVRFEFPGFQPFVLVQCQPPAVVTSALHSEWRLVAFGTSHGFGLFDHQRRQVVFVKCTLHP  
SDQLALEGPLSRVKSLLKSLRQSFRRMRSRVSSRKRHPAGPPGEAQEGSAKAERPLQNMELAPVQRKI  
EARSADSFTGFVRTLYFADTYLKDSSRHCPSSLWAGTNGGTIYAFSLRVPPAERRMDESVRAEQAKEIQL  
MHRAPVVGILVLDGHSVPLPEPLEVAHDLKSPDMQGSQQLLVVSEEQFKVFTLPKVSAKLKLKLTALLEG  
SRVRRVSAHFGSRRAEYGEHHLAVLNLGDIQVVSLPLLKQVRYSCIRREDVSGIASCVFTKYGGQF  
YLISPSEFERFSLSTKWLVEPRCLVDSAEKTNHRPENGAGPKKAPSRARNSGTQSDGEEKQPGLVMERAL  
LSDERVLKEIQSTLEGDRGSGNWRSHRAAVGCSLSNGGAE

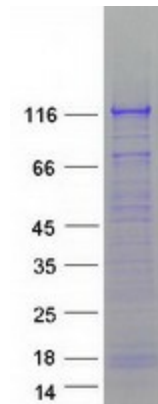
TRTRPLEQKLI SEEDLAANDILDYKDDDDKV

Tag:	C-Myc/DDK
Purity:	> 80% as determined by SDS-PAGE and Coomassie blue staining
Concentration:	>0.05 µg/µL as determined by microplate BCA method
Labeling Method:	Labeled with [U- <sup>13</sup> C <sub>6</sub> , <sup>15</sup> N <sub>4</sub> ]-L-Arginine and [U- <sup>13</sup> C <sub>6</sub> , <sup>15</sup> N <sub>2</sub> ]-L-Lysine
Buffer:	25 mM Tris-HCl, 100 mM glycine, pH 7.3
Storage:	Store at -80°C. Avoid repeated freeze-thaw cycles.



[View online »](#)

<b>Stability:</b>	Stable for 3 months from receipt of products under proper storage and handling conditions.
<b>RefSeq:</b>	<a href="#">NP_001026973</a>
<b>RefSeq Size:</b>	3590
<b>RefSeq ORF:</b>	3060
<b>Synonyms:</b>	HGL; Hugl-2; LGL2
<b>Locus ID:</b>	3993
<b>UniProt ID:</b>	<a href="#">Q6P1M3</a> , <a href="#">A0PJJ0</a>
<b>Cytogenetics:</b>	17q25.1
<b>Summary:</b>	The lethal (2) giant larvae protein of Drosophila plays a role in asymmetric cell division, epithelial cell polarity, and cell migration. This human gene encodes a protein similar to lethal (2) giant larvae of Drosophila. In fly, the protein's ability to localize cell fate determinants is regulated by the atypical protein kinase C (aPKC). In human, this protein interacts with aPKC-containing complexes and is cortically localized in mitotic cells. Alternative splicing results in multiple transcript variants encoding different isoforms. [provided by RefSeq, Jul 2008]
<b>Protein Families:</b>	Druggable Genome
<b>Protein Pathways:</b>	Tight junction

**Product images:**


Coomassie blue staining of purified LLGL2 protein (Cat# [TP309559]). The protein was produced from HEK293T cells transfected with LLGL2 cDNA clone (Cat# [RC209559]) using MegaTran 2.0 (Cat# [TT210002]).