

Product datasheet for PH309552

Galectin 2 (LGALS2) (NM_006498) Human Mass Spec Standard

Product data:

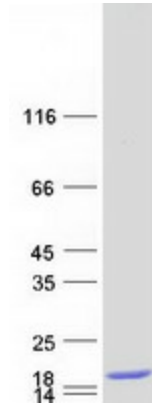
Product Type:	Mass Spec Standards
Description:	LGALS2 MS Standard C13 and N15-labeled recombinant protein (NP_006489)
Species:	Human
Expression Host:	HEK293
Expression cDNA Clone or AA Sequence:	RC209552
Predicted MW:	14.6 kDa
Protein Sequence:	>RC209552 protein sequence Red =Cloning site Green =Tags(s) MTGELEVKNMDMKPGSTLKITGSIADGTDGFVINLGQGTDKLNLHFNPRFSESTIVCNSLDGSNWGQEQR EDHLCFSPGSEVKFTVTFESDKFKVKLPDGHELTFPNRLGSHLSYLSVRGGFMSSFKLKE TR TRPLEQKLISEEDLAANDILDYKDDDDKV
Tag:	C-Myc/DDK
Purity:	> 80% as determined by SDS-PAGE and Coomassie blue staining
Concentration:	>0.05 µg/µL as determined by microplate BCA method
Labeling Method:	Labeled with [U- 13C6, 15N4]-L-Arginine and [U- 13C6, 15N2]-L-Lysine
Buffer:	25 mM Tris-HCl, 100 mM glycine, pH 7.3
Storage:	Store at -80°C. Avoid repeated freeze-thaw cycles.
Stability:	Stable for 3 months from receipt of products under proper storage and handling conditions.
RefSeq:	NP_006489
RefSeq Size:	543
RefSeq ORF:	396
Synonyms:	HL14
Locus ID:	3957
UniProt ID:	P05162
Cytogenetics:	22q13.1



[View online »](#)

Summary:

The protein encoded by this gene is a soluble beta-galactoside binding lectin. The encoded protein is found as a homodimer and can bind to lymphotoxin-alpha. A single nucleotide polymorphism in an intron of this gene can alter the transcriptional level of the protein, with a resultant increased risk of myocardial infarction. [provided by RefSeq, Jul 2008]

Product images:

Coomassie blue staining of purified LGALS2 protein (Cat# [TP309552]). The protein was produced from HEK293T cells transfected with LGALS2 cDNA clone (Cat# [RC209552]) using MegaTran 2.0 (Cat# [TT210002]).