

Product datasheet for PH309540

C2orf3 (GCFC2) (NM_003203) Human Mass Spec Standard

Product data:

| | |
|---------------------------------------|--|
| Product Type: | Mass Spec Standards |
| Description: | C2orf3 MS Standard C13 and N15-labeled recombinant protein (NP_003194) |
| Species: | Human |
| Expression Host: | HEK293 |
| Expression cDNA Clone or AA Sequence: | RC209540 |
| Predicted MW: | 89.4 kDa |
| Protein Sequence: | >RC209540 protein sequence Red=Cloning site Green=Tags(s) |

MAHRPKRTFRQRAADSSSDGAEESPAEPGAARELPVPGSAEEPPSGGGRAQVAGLPHRVGRGRGRV
WASSRRATKAAPRADEGESRSLDVTDEEDKIHHSSSEKDDQGLSSDSSSLGKELSSSTVKIPDAAFI
QAARRKRELARAQDDYISLDVQHTSSISGMKRESEDDPESEPDDHEKRIPFTLRPQTLRQMAEESISRN
EETSEESQEDEKQDTWEQQMRKAVKIIIEERDIDLSCNGSSKVKKFDTSISFPPVNLEIKKQLNTRLT
LLQETHRSHLREYEKYVQDVKSSKSTIQNLESSNQALNCKFYKSMKIYVENLIDCLNEKIINIQEI
ESSMHALLLKQAMTFMKRRQDELKHESTYLQQLSRKDETSTSGNFSVDEKTQWILEEIESRRTKRRQARVLSG
NCNHQEGTSSDDELPSAEMIDFQKSGDILQKQKVFEEVQDDFCNIQNILKFKQWREKFPDSYVEAFI
SLCIPKLLNPLIRVQLIDWNPLKLESTGLKEMPWFKSVEEFMDSSVEDSKKESSSDKKVLSAIINKTIIP
RLTDFVEFLWDPLSTSQTSLITHCRVILEEHSTCENEVSKSRQDLLKSI VSRMKA VEDDVFIPLYPKS
AVENKTSPhSKFQERQFWSGLKLFERNILLWNGLLTDDTLQELGLKLLNRYLIIALLNATPGDPVVKCN
QVAACLPEKWFENSAMRTSIPQLENFIQFLLQSAHKLRSRSEFRDEVEEIIILVLIKALNQAESFIGEHH
LDHLKSLIKED

TRTRPLEQKLI SEEDLAANDILDYKDDDDKV

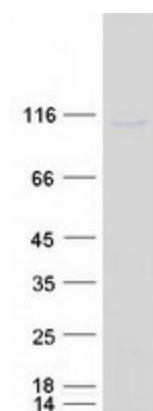
| | |
|------------------|--|
| Tag: | C-Myc/DDK |
| Purity: | > 80% as determined by SDS-PAGE and Coomassie blue staining |
| Concentration: | >0.05 µg/µL as determined by microplate BCA method |
| Labeling Method: | Labeled with [U- ¹³ C ₆ , ¹⁵ N ₄]-L-Arginine and [U- ¹³ C ₆ , ¹⁵ N ₂]-L-Lysine |
| Buffer: | 25 mM Tris-HCl, 100 mM glycine, pH 7.3 |
| Storage: | Store at -80°C. Avoid repeated freeze-thaw cycles. |
| Stability: | Stable for 3 months from receipt of products under proper storage and handling conditions. |
| RefSeq: | NP_003194 |



[View online »](#)

| | |
|-------------------|--|
| RefSeq Size: | 4455 |
| RefSeq ORF: | 2343 |
| Synonyms: | C2orf3; DNABF; GCF; TCF9 |
| Locus ID: | 6936 |
| UniProt ID: | P16383 , A4UHR0 |
| Cytogenetics: | 2p12 |
| Summary: | The first mRNA transcript isolated for this gene was part of an artificial chimera derived from two distinct gene transcripts and a primer used in the cloning process (see Genbank accession M29204). A positively charged amino terminus present only in the chimera was determined to bind GC-rich DNA, thus mistakenly thought to identify a transcription factor gene. [provided by RefSeq, Jul 2008] |
| Protein Families: | Transcription Factors |

Product images:



Coomassie blue staining of purified GCFC2 protein (Cat# [TP309540]). The protein was produced from HEK293T cells transfected with GCFC2 cDNA clone (Cat# [RC209540]) using MegaTran 2.0 (Cat# [TT210002]).