

Product datasheet for PH309530

DNA Ligase III (LIG3) (NM_013975) Human Mass Spec Standard

Product data:

Product Type:	Mass Spec Standards
Description:	LIG3 MS Standard C13 and N15-labeled recombinant protein (NP_039269)
Species:	Human
Expression Host:	HEK293
Expression cDNA Clone or AA Sequence:	RC209530
Predicted MW:	112.9 kDa
Protein Sequence:	>RC209530 protein sequence Red=Cloning site Green=Tags(s)

MSLAFKIFFPQTLRALSRKELCLFRKHHWRDVRQFSQWSETDLLHGHPFLRRKPVLSFQGSHLRSRATY
LVFLPGLHVGLCSGPCMAEQRFCDYAKRGTAGCKKCKEKIVKGVCRIGKVVPNPFSESGDMKEWYHI
KCMFEKLERARATTKIEDLTELEGWEELEDNEKEQITQHIADLSSKAAGTPKKKAVVQAKLTTTGQVTS
PVKGASVFTSTNPRKFSGFSAKPNNSGEAPSSPTPKRSLSSSKCDPRHKDCLLREFRKLKAMVADNPSYN
TKTQIIQDFLRKGSAGDGFHGDVYLVTKLLLPGVIKTVYNLNDKQIVKLSRIFNCNPDDMARDLEQGDV
SETIRVFFEQSKSFPPAAKSLLTIQEVDEFLLRLSKLTKEDEQQALQDIASRCTANDLKCIIIRLIKHDL
KMNSGAKHVLDALDPNAYEAFKASRNLDQVVERVLHNAQEVEKEPQRRALSVQASLMTVPQPLAEACK
SVEYAMKKCPNGMFSEIKYDGERVQVHKNGDHF SYFSRSLKPVLPKHVAHF KDYIPQAFPGGHSMLDSE
VLLIDNKTGKPLPFGTLGVHKAQAFQDANVCLFVFDCIYFNDVSLMDRPLCERRKFLHDNMVEIPNRIMF
SEMKRVTKALDLADMITRVIQEGLEGLVLKDVKGTYPGKRHWLVKVKDYLVNEGAMADTADLVVLGAFYG
QGSKGGMMSIFLMGCYDPGSQKWCVTVKCAGGHDDATLARLQNELDMVKISKDPSKIPSWLVKNKIYYPD
FIVPDPKKAAVWEITGAEFKSEAHADGIRIFRPRCTRIRDDKDWK SATNLPQLKELYLSKEKADFTV
VAGDEGSSTTGGSSSEENKGPSGSAVSRKAPSKPSASTKKAEGKLSNSNSKDGNMQTAKPSAMKVGEKLAT
KSSPVKVGKRAADELTCQTKVLLDIFTGVRLYLPSTPDFSRLRRYFVAFDGDLVQEFDMTSATHVLG
SRDKNPAAQQVSPewiwacIRKRRLVAPC

TRTRPLEQKLI SEEDLAANDILDYKDDDDKV

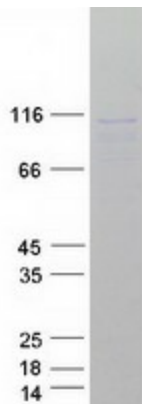
Tag:	C-Myc/DDK
Purity:	> 80% as determined by SDS-PAGE and Coomassie blue staining
Concentration:	>0.05 µg/µL as determined by microplate BCA method
Labeling Method:	Labeled with [U- ¹³ C ₆ , ¹⁵ N ₄]-L-Arginine and [U- ¹³ C ₆ , ¹⁵ N ₂]-L-Lysine
Buffer:	25 mM Tris-HCl, 100 mM glycine, pH 7.3
Storage:	Store at -80°C. Avoid repeated freeze-thaw cycles.



[View online »](#)

Stability:	Stable for 3 months from receipt of products under proper storage and handling conditions.
RefSeq:	NP_039269
RefSeq Size:	3722
RefSeq ORF:	3027
Synonyms:	LIG2; LIG3alpha
Locus ID:	3980
UniProt ID:	P49916
Cytogenetics:	17q12
Summary:	This gene is a member of the DNA ligase family. Each member of this family encodes a protein that catalyzes the joining of DNA ends but they each have a distinct role in DNA metabolism. The protein encoded by this gene is involved in excision repair and is located in both the mitochondria and nucleus, with translation initiation from the upstream start codon allowing for transport to the mitochondria and translation initiation from a downstream start codon allowing for transport to the nucleus. Additionally, alternate transcriptional splice variants, encoding different isoforms, have been characterized. [provided by RefSeq, Jul 2008]
Protein Families:	Druggable Genome
Protein Pathways:	Base excision repair

Product images:



Coomassie blue staining of purified LIG3 protein (Cat# [TP309530]). The protein was produced from HEK293T cells transfected with LIG3 cDNA clone (Cat# [RC209530]) using MegaTran 2.0 (Cat# [TT210002]).