

Product datasheet for PH309516

Lactate Dehydrogenase C (LDHC) (NM_002301) Human Mass Spec Standard

Product data:

Product Type:	Mass Spec Standards
Description:	LDHC MS Standard C13 and N15-labeled recombinant protein (NP_002292)
Species:	Human
Expression Host:	HEK293
Expression cDNA Clone or AA Sequence:	RC209516
Predicted MW:	36.1 kDa
Protein Sequence:	>RC209516 representing NM_002301 Red=Cloning site Green=Tags(s) MSTVKEQLIEKLIEDDENSQCKITIVGTGAVGMACAISILLKDLADELALVDVALDKLKGEMMDLQHGS LFFSTSKITSGKDYSVANSRIVIVTAGARQQEGETRLALVQRNVAIMKSIIPAIHVHSPDCKILVVS NPVDILTYIVWKISGLPVTRVIGSGCNLDSARFRYLIGEKLVHPTSCHGWIIIEHGDSVPLW SGVNVAGVALKTLDPKLGTDSDKEHWKNIHKQVIQSAYEIIKLGKGYTSWAIGLSVMDLVGSIL KNLRRVHPVSTMVKGLYGIKEELFLSIPCVLGRNGVSDVVKINLNSEEEALFKSAETLWNIQDLIF TRTRPLEQKLISEEDLAANDILDYKDDDDKV
Tag:	C-Myc/DDK
Purity:	> 80% as determined by SDS-PAGE and Coomassie blue staining
Concentration:	>0.05 µg/µL as determined by microplate BCA method
Labeling Method:	Labeled with [U- ¹³ C ₆ , ¹⁵ N ₄]-L-Arginine and [U- ¹³ C ₆ , ¹⁵ N ₂]-L-Lysine
Buffer:	25 mM Tris-HCl, 100 mM glycine, pH 7.3
Storage:	Store at -80°C. Avoid repeated freeze-thaw cycles.
Stability:	Stable for 3 months from receipt of products under proper storage and handling conditions.
RefSeq:	NP_002292
RefSeq Size:	1278
RefSeq ORF:	996
Synonyms:	CT32; LDH3; LDHX
Locus ID:	3948



[View online »](#)

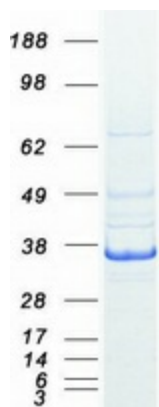
UniProt ID: [P07864](#), [A0A140VKA7](#)

Cytogenetics: 11p15.1

Summary: Lactate dehydrogenase C catalyzes the conversion of L-lactate and NAD to pyruvate and NADH in the final step of anaerobic glycolysis. LDHC is testis-specific and belongs to the lactate dehydrogenase family. Two transcript variants have been detected which differ in the 5' untranslated region. [provided by RefSeq, Jul 2008]

Protein Pathways: Cysteine and methionine metabolism, Glycolysis / Gluconeogenesis, Metabolic pathways, Propanoate metabolism, Pyruvate metabolism

Product images:



Coomassie blue staining of purified LDHC protein (Cat# [TP309516]). The protein was produced from HEK293T cells transfected with LDHC cDNA clone (Cat# [RC209516]) using MegaTran 2.0 (Cat# [TT210002]).