

## Product datasheet for PH309511

### RAB22A (NM\_020673) Human Mass Spec Standard

#### Product data:

Product Type:	Mass Spec Standards
Description:	RAB22A MS Standard C13 and N15-labeled recombinant protein (NP_065724)
Species:	Human
Expression Host:	HEK293
Expression cDNA Clone or AA Sequence:	RC209511
Predicted MW:	21.9 kDa
Protein Sequence:	>RC209511 protein sequence Red=Cloning site Green=Tags(s)  MALRELKVCLLGDTGVGKSSIVWRFVEDSFDPNINPTIGASFMTKTVQYQNELHKFLIWDTAGQERFRAL APMYRGSAAAIIVYDITKEETFSTLKNWVKELRQHGPPIVVAIAGNKCDLIDVREVMERDAKDYADSI HAIFVETSAKNAININELFIEISRRIIPSTDANLPSGGKGFKLRRQPSEPKRSCC  TRTRPLEQKLISEEDLAANDILDYKDDDDKV
Tag:	C-Myc/DDK
Purity:	> 80% as determined by SDS-PAGE and Coomassie blue staining
Concentration:	>0.05 µg/µL as determined by microplate BCA method
Labeling Method:	Labeled with [U- 13C6, 15N4]-L-Arginine and [U- 13C6, 15N2]-L-Lysine
Buffer:	25 mM Tris-HCl, 100 mM glycine, pH 7.3
Storage:	Store at -80°C. Avoid repeated freeze-thaw cycles.
Stability:	Stable for 3 months from receipt of products under proper storage and handling conditions.
RefSeq:	<a href="#">NP_065724</a>
RefSeq Size:	8702
RefSeq ORF:	582
Locus ID:	57403
UniProt ID:	<a href="#">Q9UL26</a>
Cytogenetics:	20q13.32



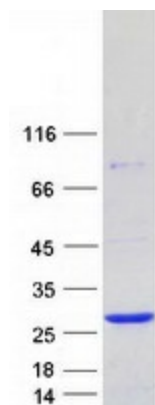
[View online »](#)

**Summary:** The protein encoded by this gene is a member of the RAB family of small GTPases. The GTP-bound form of the encoded protein has been shown to interact with early-endosomal antigen 1, and may be involved in the trafficking of and interaction between endosomal compartments. [provided by RefSeq, Jul 2008]

**Protein Families:** Druggable Genome

**Protein Pathways:** Endocytosis

**Product images:**



Coomassie blue staining of purified RAB22A protein (Cat# [TP309511]). The protein was produced from HEK293T cells transfected with RAB22A cDNA clone (Cat# [RC209511]) using MegaTran 2.0 (Cat# [TT210002]).