

Product datasheet for PH309510

MASA (ENOPH1) (NM_021204) Human Mass Spec Standard

Product data:

Product Type:	Mass Spec Standards
Description:	ENOPH1 MS Standard C13 and N15-labeled recombinant protein (NP_067027)
Species:	Human
Expression Host:	HEK293
Expression cDNA Clone or AA Sequence:	RC209510
Predicted MW:	28.9 kDa
Protein Sequence:	>RC209510 protein sequence Red=Cloning site Green=Tags(s) MVVLSVPAEVTVILLDIEGTTTPIAFVKDILFPYIEENVKEYLQTHWEEECQQDVSLLRKQAEEDAHLG GAVPIPAASGNGVDDLQQMIQAVVDNVCWQMSLDRKTTALKQLQGHMWRAAFTAGRMKAEFFADVPAVR KWREAGMKVYIYSSGSVEAQKLLFGHSTEGDILELVDGHFDTKIGHKVESESyrKIADSIgcSTNNILFL TDVTREASAAEEADVHVAVVVRPGNAGLTDDEKTYSLITSFSELYLPSST TRTRPLEQKLISEEDLAANDILDYKDDDDKV
Tag:	C-Myc/DDK
Purity:	> 80% as determined by SDS-PAGE and Coomassie blue staining
Concentration:	>0.05 µg/µL as determined by microplate BCA method
Labeling Method:	Labeled with [U- ¹³ C ₆ , ¹⁵ N ₄]-L-Arginine and [U- ¹³ C ₆ , ¹⁵ N ₂]-L-Lysine
Buffer:	25 mM Tris-HCl, 100 mM glycine, pH 7.3
Storage:	Store at -80°C. Avoid repeated freeze-thaw cycles.
Stability:	Stable for 3 months from receipt of products under proper storage and handling conditions.
RefSeq:	NP_067027
RefSeq Size:	2191
RefSeq ORF:	783
Synonyms:	E1; MASA; MST145; mtnC
Locus ID:	58478
UniProt ID:	Q9UHY7



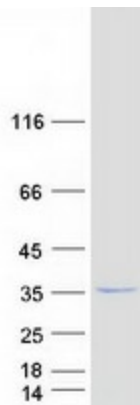
[View online »](#)

Cytogenetics: 4q21.22

Summary: Bifunctional enzyme that catalyzes the enolization of 2,3-diketo-5-methylthiopentyl-1-phosphate (DK-MTP-1-P) into the intermediate 2-hydroxy-3-keto-5-methylthiopentenyl-1-phosphate (HK-MTPenyl-1-P), which is then dephosphorylated to form the acireductone 1,2-dihydroxy-3-keto-5-methylthiopentene (DHK-MTPene).[UniProtKB/Swiss-Prot Function]

Protein Pathways: Cysteine and methionine metabolism

Product images:



Coomassie blue staining of purified ENOPH1 protein (Cat# [TP309510]). The protein was produced from HEK293T cells transfected with ENOPH1 cDNA clone (Cat# [RC209510]) using MegaTran 2.0 (Cat# [TT210002]).