

Product datasheet for PH309500

THOC7 (NM_025075) Human Mass Spec Standard

Product data:

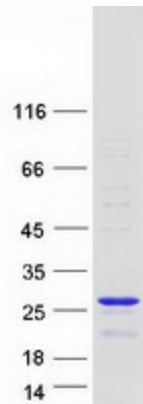
Product Type:	Mass Spec Standards
Description:	THOC7 MS Standard C13 and N15-labeled recombinant protein (NP_079351)
Species:	Human
Expression Host:	HEK293
Expression cDNA Clone or AA Sequence:	RC209500
Predicted MW:	23.7 kDa
Protein Sequence:	<p>>RC209500 protein sequence</p> <p>Red=Cloning site Green=Tags(s)</p> <p>MGAVTDDEVIRKRLIDGDGAGDDRRINLLVKSFIKWCNSGSQEEGYSQYQRMSTLSQCEFSMGKTLLV YDMNLREMENYEKIYKEIECSIAGAHEKIAECKKQILQAKRIRKNRQEYDALAKVIQHHPDRHETLKELE ALGKELEHLSHIKESVEDKLELRKQFHVLLSTIHELQQTLENDEKLSEVEEAQEASMETDPKP</p> <p>TRTRPLEQKLISEEDLAANDILDYKDDDDKV</p>
Tag:	C-Myc/DDK
Purity:	> 80% as determined by SDS-PAGE and Coomassie blue staining
Concentration:	>0.05 µg/µL as determined by microplate BCA method
Labeling Method:	Labeled with [U- ¹³ C ₆ , ¹⁵ N ₄]-L-Arginine and [U- ¹³ C ₆ , ¹⁵ N ₂]-L-Lysine
Buffer:	25 mM Tris-HCl, 100 mM glycine, pH 7.3
Storage:	Store at -80°C. Avoid repeated freeze-thaw cycles.
Stability:	Stable for 3 months from receipt of products under proper storage and handling conditions.
RefSeq:	<u>NP_079351</u>
RefSeq Size:	1027
RefSeq ORF:	612
Synonyms:	fSAP24; hTREX30; NIF3L1BP1
Locus ID:	80145
UniProt ID:	<u>Q6I9Y2</u> , <u>A0A024R332</u>


[View online »](#)

Cytogenetics: 3p14.1

Summary: Required for efficient export of polyadenylated RNA. Acts as component of the THO subcomplex of the TREX complex which is thought to couple mRNA transcription, processing and nuclear export, and which specifically associates with spliced mRNA and not with unspliced pre-mRNA. TREX is recruited to spliced mRNAs by a transcription-independent mechanism, binds to mRNA upstream of the exon-junction complex (EJC) and is recruited in a splicing- and cap-dependent manner to a region near the 5' end of the mRNA where it functions in mRNA export to the cytoplasm via the TAP/NFX1 pathway.[UniProtKB/Swiss-Prot Function]

Product images:



Coomassie blue staining of purified THOC7 protein (Cat# [TP309500]). The protein was produced from HEK293T cells transfected with THOC7 cDNA clone (Cat# [RC209500]) using MegaTran 2.0 (Cat# [TT210002]).