

Product datasheet for PH309496

LMAN2L (NM_030805) Human Mass Spec Standard

Product data:

Product Type:	Mass Spec Standards
Description:	LMAN2L MS Standard C13 and N15-labeled recombinant protein (NP_110432)
Species:	Human
Expression Host:	HEK293
Expression cDNA Clone or AA Sequence:	RC209496
Predicted MW:	39.7 kDa
Protein Sequence:	>RC209496 protein sequence Red=Cloning site Green=Tags(s) MAATLGPLGSWQQWRRCLSARDGSRMLLLLLLLGSGQGPQQVGAGQTFEYLKREHSLSKPYQGVGTGSSS LWNLMGNAMVMTQYIRLTPDMQSKQGALWNRVPCFLRDWELQVHFKIHGQKKNLHGDGLAIWYTKDRMQ PGPVFGNMDKFGVGLGVFVDTYPNEEKQQERVFPYISAMVNNGSLSYDHERDGRPTELGGCTAIVRNLHYD TFLVIRYVKRHLTIMMDIDGKHEWRDCIEVPGVRLPRGYFTSSITGDLSNDHVDVSLKLFELTVERTP EEEKLRDVFPLPSVDNMKLPENTAPLPPLSGLALFLIVFFSLVFSVFAIVIGIILYNKWQEQRKRFY TRTRPLEQKLI SEEDLAANDILDYKDDDDKV
Tag:	C-Myc/DDK
Purity:	> 80% as determined by SDS-PAGE and Coomassie blue staining
Concentration:	>0.05 µg/µL as determined by microplate BCA method
Labeling Method:	Labeled with [U- ¹³ C ₆ , ¹⁵ N ₄]-L-Arginine and [U- ¹³ C ₆ , ¹⁵ N ₂]-L-Lysine
Buffer:	25 mM Tris-HCl, 100 mM glycine, pH 7.3
Storage:	Store at -80°C. Avoid repeated freeze-thaw cycles.
Stability:	Stable for 3 months from receipt of products under proper storage and handling conditions.
RefSeq:	NP_110432
RefSeq Size:	2425
RefSeq ORF:	1044
Synonyms:	MRT52; VIPL
Locus ID:	81562



[View online »](#)

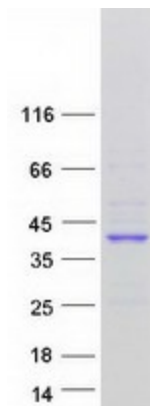
UniProt ID: [Q9H0V9](#)

Cytogenetics: 2q11.2

Summary: This gene encodes a protein belonging to the L-type lectin group of type 1 membrane proteins, which function in the mammalian early secretory pathway. These proteins contain luminal carbohydrate recognition domains, which display homology to leguminous lectins. Unlike other proteins of the group, which cycle in the early secretory pathway and are predominantly associated with post endoplasmic reticulum membranes, the protein encoded by this gene is a non-cycling resident protein of the ER, where it functions as a cargo receptor for glycoproteins. It is proposed to regulate exchange of folded proteins for transport to the Golgi and exchange of misfolded glycoproteins for transport to the ubiquitin-proteasome pathway. [provided by RefSeq, Apr 2016]

Protein Families: Druggable Genome, Transmembrane

Product images:



Coomassie blue staining of purified LMAN2L protein (Cat# [TP309496]). The protein was produced from HEK293T cells transfected with LMAN2L cDNA clone (Cat# [RC209496]) using MegaTran 2.0 (Cat# [TT210002]).