

Product datasheet for PH309495

RGS20 (NM_003702) Human Mass Spec Standard

Product data:

Product Type:	Mass Spec Standards
Description:	RGS20 MS Standard C13 and N15-labeled recombinant protein (NP_003693)
Species:	Human
Expression Host:	HEK293
Expression cDNA Clone or AA Sequence:	RC209495
Predicted MW:	27.1 kDa
Protein Sequence:	>RC209495 protein sequence Red=Cloning site Green=Tags(s) MRTADGGEPAGASSPAGRVDGGLQMGSERMEMRKRQMPAAQDTPGAAPGQPGAGSRGSNACCFWCSSCS CSCLTVRNQEDQRPTIASHLRADLPTWEE SPAPTL EEVNAWAQSFDKLMVTPAGRNAFREFLRTEFSEE NMLFWMACEELKKEANKNIIIEEKARIIYEDYISILSPKEVSLDSRVREVINRNMVEPSQHIFDDAQLQIY TLMHRDSYPRFMNSAVYKDLLQSLSEKSIEA TRTRPLEQKLI SEEDLAANDILDYKDDDDKV
Tag:	C-Myc/DDK
Purity:	> 80% as determined by SDS-PAGE and Coomassie blue staining
Concentration:	>0.05 µg/µL as determined by microplate BCA method
Labeling Method:	Labeled with [U- ¹³ C ₆ , ¹⁵ N ₄]-L-Arginine and [U- ¹³ C ₆ , ¹⁵ N ₂]-L-Lysine
Buffer:	25 mM Tris-HCl, 100 mM glycine, pH 7.3
Storage:	Store at -80°C. Avoid repeated freeze-thaw cycles.
Stability:	Stable for 3 months from receipt of products under proper storage and handling conditions.
RefSeq:	NP_003693
RefSeq Size:	1716
RefSeq ORF:	723
Synonyms:	g(z)GAP; gz-GAP; RGSZ1; ZGAP1
Locus ID:	8601
UniProt ID:	O76081 , H9NIM5 , B3KSW4



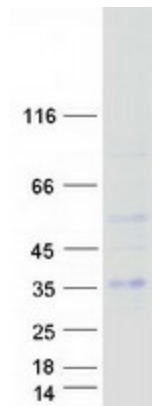
[View online »](#)

Cytogenetics: 8q11.23

Summary: The protein encoded by this gene belongs to the family of regulator of G protein signaling (RGS) proteins, which are regulatory and structural components of G protein-coupled receptor complexes. RGS proteins inhibit signal transduction by increasing the GTPase activity of G protein alpha subunits, thereby driving them into their inactive GDP-bound forms. This protein selectively binds to G(z)-alpha and G(alpha)-i2 subunits, and regulates their signaling activities. Alternatively spliced transcript variants encoding different isoforms have been found for this gene. [provided by RefSeq, Sep 2011]

Protein Families: Druggable Genome

Product images:



Coomassie blue staining of purified RGS20 protein (Cat# [TP309495]). The protein was produced from HEK293T cells transfected with RGS20 cDNA clone (Cat# [RC209495]) using MegaTran 2.0 (Cat# [TT210002]).