

Product datasheet for PH309486

SRPR beta (SRPRB) (NM_021203) Human Mass Spec Standard

Product data:

Product Type:	Mass Spec Standards
Description:	SRPRB MS Standard C13 and N15-labeled recombinant protein (NP_067026)
Species:	Human
Expression Host:	HEK293
Expression cDNA Clone or AA Sequence:	RC209486
Predicted MW:	29.7 kDa
Protein Sequence:	>RC209486 protein sequence Red=Cloning site Green=Tags(s) MASADSRRLADGGGAGGTFQPYLDTLRQELQQTDPDLLSVVVAVLAVLLTLVFWKLIRSRSSQRAVLLV GLCDSGKTLLFVRLLTGLYRDTQTSITDSCAVYRVNNRGNSLTLIDLPGHESLRQLFLERFKSSARAIIV FVYDAAAFQREVKDVAEFLYQVLIDSMGLKNTPSFLIACNKQDIAMAKSAKLIQQQLEKELNLRVTRSA APSTLDSSTAPAQLGKKGKEFEFSQLPLKVEFLECSAKGGRGDVGSADIQDLEKWLAKIA SGPTRTRPLEQKLI SEEDLAANDILDYKDDDDKV
Tag:	C-Myc/DDK
Purity:	> 80% as determined by SDS-PAGE and Coomassie blue staining
Concentration:	>0.05 µg/µL as determined by microplate BCA method
Labeling Method:	Labeled with [U- ¹³ C ₆ , ¹⁵ N ₄]-L-Arginine and [U- ¹³ C ₆ , ¹⁵ N ₂]-L-Lysine
Buffer:	25 mM Tris-HCl, 100 mM glycine, pH 7.3
Storage:	Store at -80°C. Avoid repeated freeze-thaw cycles.
Stability:	Stable for 3 months from receipt of products under proper storage and handling conditions.
RefSeq:	NP_067026
RefSeq Size:	2880
RefSeq ORF:	813
Synonyms:	APMCF1; SR-beta
Locus ID:	58477
UniProt ID:	Q9Y5M8 , Q549N5



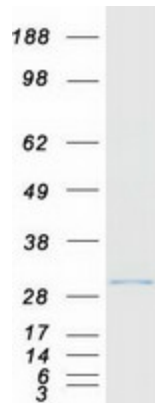
[View online »](#)

Cytogenetics: 3q22.1

Summary: The protein encoded by this gene has similarity to mouse protein which is a subunit of the signal recognition particle receptor (SR). This subunit is a transmembrane GTPase belonging to the GTPase superfamily. It anchors alpha subunit, a peripheral membrane GTPase, to the ER membrane. SR is required for the cotranslational targeting of both secretory and membrane proteins to the ER membrane. [provided by RefSeq, Jul 2008]

Protein Families: Druggable Genome, Transmembrane

Product images:



Coomassie blue staining of purified SRPRB protein (Cat# [TP309486]). The protein was produced from HEK293T cells transfected with SRPRB cDNA clone (Cat# [RC209486]) using MegaTran 2.0 (Cat# [TT210002]).