

Product datasheet for PH309481

ARMC6 (NM_033415) Human Mass Spec Standard

Product data:

Product Type:	Mass Spec Standards
Description:	ARMC6 MS Standard C13 and N15-labeled recombinant protein (NP_219483)
Species:	Human
Expression Host:	HEK293
Expression cDNA Clone or AA Sequence:	RC209481
Predicted MW:	51.5 kDa
Protein Sequence:	>RC209481 protein sequence Red=Cloning site Green=Tags(s)

MVSKRIAQETFDAAVRENIEEFAMGPVEAVKEAVEQFESQGVDSLNI VKTAPKVSADGSQEP THDILQML
 SDLQESVASSRPQEVSAYLTRFC DQCKQDKACRFLAAQKGAYPIIFTAWKLATAGDQGLLLQSLNALS VL
 TDGQPDLLDAQGLQLLVATLTQNADEADLTCSGIRCVRHA CLKHEQNRQDLVKAGVLP LLTGAI THHGHH
 TDVVREACWALRVMTFDDDIRVPFGHAHNHAKMIVQENKGLKVL IEATKAFLDNP GILSEL CGTLSRLAI
 RNEFCQE VVDL GGLSILVSL LADCNDHQMRDQSGVQELVKQV LSTLRAIAGND DVKDAIVRAGGTESIVA
 AMTQHLTSPQVCEQSCAALCFLALRKP DNSRIIVEGGGAVAALQAMKAHPQKAGVQKQACMLIRNLVAHG
 QAFSKPILD LGAEALIMQARS AHRDCEDVAKAALRDLGCHVELRELWTGQRGNLAP

TRTRPLEQKLI SEEDLAANDILDYKDDDDKV

Tag:	C-Myc/DDK
Purity:	> 80% as determined by SDS-PAGE and Coomassie blue staining
Concentration:	>0.05 µg/µL as determined by microplate BCA method
Labeling Method:	Labeled with [U- ¹³ C ₆ , ¹⁵ N ₄]-L-Arginine and [U- ¹³ C ₆ , ¹⁵ N ₂]-L-Lysine
Buffer:	25 mM Tris-HCl, 100 mM glycine, pH 7.3
Storage:	Store at -80°C. Avoid repeated freeze-thaw cycles.
Stability:	Stable for 3 months from receipt of products under proper storage and handling conditions.
RefSeq:	<u>NP_219483</u>
RefSeq Size:	2397
RefSeq ORF:	1428
Synonyms:	R30923_1



[View online »](#)

Locus ID: 93436

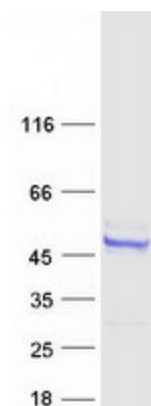
UniProt ID: [Q6NXE6](#)

Cytogenetics: 19p13.11

Summary: The function of this gene's protein product has not been determined. A related protein in mouse suggests that this protein has a conserved function. Two transcript variants encoding different isoforms have been found for this gene. [provided by RefSeq, Nov 2010]

Protein Families: Stem cell - Pluripotency

Product images:



Coomassie blue staining of purified ARMC6 protein (Cat# [TP309481]). The protein was produced from HEK293T cells transfected with ARMC6 cDNA clone (Cat# [RC209481]) using MegaTran 2.0 (Cat# [TT210002]).