

Product datasheet for PH309476

Collagen VI (COL6A2) (NM_001849) Human Mass Spec Standard

Product data:

Product Type:	Mass Spec Standards
Description:	COL6A2 MS Standard C13 and N15-labeled recombinant protein (NP_001840)
Species:	Human
Expression Host:	HEK293
Expression cDNA Clone or AA Sequence:	RC209476
Predicted MW:	108.6 kDa
Protein Sequence:	>RC209476 protein sequence Red=Cloning site Green=Tags(s)

MLQGTCSVLLWGLGAIQAQQQEIVISPDTTERRNNCPEKTDPCIHVYFVLDTSSEVTMQSPTDILLFHM
KQFVFPQFISQLQNEFYLDQVALSWRYGGLHFSQVEVFSPPGSDRASFIKNLQGISFRRGTFTDCALAN
MTEQIRQDRSKGTVHFVAVITDGHVTGSPCGGIKLQAERAREEGIRLFAVAPNQNLKEQLRDIASPH
LYRNDYATMLPDSTEIDQDTINRIKVMKHEAYGECYKVSCLIPGSPGPKGYRGKQKAKGNMGEPGEP
QKGRQGDPIEGPIGFPGPKGVPGFKGKGFADGRKAGPLAGKNGTDGKQKGLGRIGPPGCKGDPGN
RGPDPGYPGEAGSPGERGDQGGKGDPRGRRGPPGEIGAKGSKGYQNGGAPGSPGVKAGKGGPGRGPK
GEPGRRGDPGKSPGSDGPKGKGDPEGPRGLAGEVGNKGAKGDRGLPGPRGPQALGEPGKQGSRG
DPGDAGPRGDSGQPGKGDPRPGFSYPGPRGAPGKGEPRGPEGGRGDFGLKGEPRGKGEKGEPADP
GPPGEPGPRGPRGVPGEPEGPPGDPGLTECDVMTYVRETCGCCCEKRCGALDVVFVIDSSESIYTN
FTLEKNFVINVVNRLGAIKDPKSETGTRVGVVQYSHEGTFEAIQLDDERIDSLSSFKEAVKNLEWIAGG
TWTPSALKFAYDRLIKESRRQKTRVFAVITDGRHDPRDDDLNLRALCDRDVTVTAIGIGDMFHEKHESE
NLYSIACDKPQQVRNMTLFSDLVAEKFIIDMEDVLCPPDQIVCPDLPCQTELSVAQCTQRPVDIVFLLDG
SERLGEQNFHKARRFVEQVARRLTLARRDDPLNARVALLQFGGPGEQQVAFPLSHNLTAIHEALETQY
LNSFSHVGAGVVHAINAIVRSRGGARRHAELSFVFLTDGVTGNDSLHESAHSMRKQNVVPTVLALGSDV
DMDVLTTLSLGDRAAVFHEKDYDSLAPQGFDFRIRWIC

SGPTRTRPLEQKLI SEEDLAANDILDYKDDDDKV

Tag:	C-Myc/DDK
Purity:	> 80% as determined by SDS-PAGE and Coomassie blue staining
Concentration:	>0.05 µg/µL as determined by microplate BCA method
Labeling Method:	Labeled with [U- ¹³ C ₆ , ¹⁵ N ₄]-L-Arginine and [U- ¹³ C ₆ , ¹⁵ N ₂]-L-Lysine
Buffer:	25 mM Tris-HCl, 100 mM glycine, pH 7.3
Storage:	Store at -80°C. Avoid repeated freeze-thaw cycles.



[View online »](#)

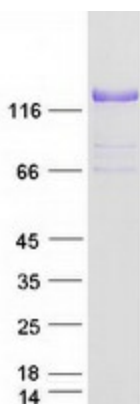
Stability:	Stable for 3 months from receipt of products under proper storage and handling conditions.
RefSeq:	NP_001840
RefSeq Size:	3455
RefSeq ORF:	3057
Synonyms:	BTHLM1; PP3610; UCMD1
Locus ID:	1292
UniProt ID:	P12110 , A0A384MDP3
Cytogenetics:	21q22.3

Summary: This gene encodes one of the three alpha chains of type VI collagen, a beaded filament collagen found in most connective tissues. The product of this gene contains several domains similar to von Willebrand Factor type A domains. These domains have been shown to bind extracellular matrix proteins, an interaction that explains the importance of this collagen in organizing matrix components. Mutations in this gene are associated with Bethlem myopathy and Ullrich scleroatonic muscular dystrophy. Three transcript variants have been identified for this gene. [provided by RefSeq, Jul 2008]

Protein Families: Secreted Protein

Protein Pathways: ECM-receptor interaction, Focal adhesion

Product images:



Coomassie blue staining of purified COL6A2 protein (Cat# [TP309476]). The protein was produced from HEK293T cells transfected with COL6A2 cDNA clone (Cat# [RC209476]) using MegaTran 2.0 (Cat# [TT210002]).