

## Product datasheet for PH309455

### Cytochrome b reductase 1 (CYBRD1) (NM\_024843) Human Mass Spec Standard

#### Product data:

Product Type:	Mass Spec Standards
Description:	CYBRD1 MS Standard C13 and N15-labeled recombinant protein (NP_079119)
Species:	Human
Expression Host:	HEK293
Expression cDNA Clone or AA Sequence:	RC209455
Predicted MW:	31.7 kDa
Protein Sequence:	>RC209455 protein sequence Red=Cloning site Green=Tags(s)  MAMEGYWRFLALLGSALLVGFLSVIFALVWVLHYREGLGWDGSALEFNWHPVLMVTGFVFIQGIATIVYR LPWTWKCSKLLMKSIIHAGLNAVAAILAIISVVAVFENHNVNNIANMYSLHSWGLIAVICYLLQLLSGFS VFLLPWAPLSLRAFLMPIHVYSGIVIFGTVIATAMGLTEKLIFSLRDPAYSTFPPEGVFNLTGLLILV FGALIFWIVTRPQWKRPKEPNSTILHPNGGTEQGARGSMPAYSGNMDKSDSELNNEVAARKRNALDEA GQRSTM  TRTRPLEQKLISEEDLAANDILDYKDDDDKV
Tag:	C-Myc/DDK
Purity:	> 80% as determined by SDS-PAGE and Coomassie blue staining
Concentration:	>0.05 µg/µL as determined by microplate BCA method
Labeling Method:	Labeled with [U- <sup>13</sup> C <sub>6</sub> , <sup>15</sup> N <sub>4</sub> ]-L-Arginine and [U- <sup>13</sup> C <sub>6</sub> , <sup>15</sup> N <sub>2</sub> ]-L-Lysine
Buffer:	25 mM Tris-HCl, 100 mM glycine, pH 7.3
Storage:	Store at -80°C. Avoid repeated freeze-thaw cycles.
Stability:	Stable for 3 months from receipt of products under proper storage and handling conditions.
RefSeq:	<u><a href="#">NP_079119</a></u>
RefSeq Size:	4390
RefSeq ORF:	858
Synonyms:	CYB561A2; DCYTB; FRRS3
Locus ID:	79901



[View online »](#)

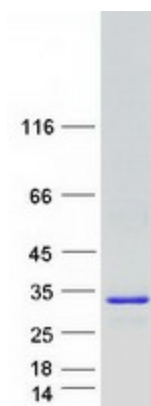
UniProt ID: [Q53TN4](#)

Cytogenetics: 2q31.1

Summary: This gene is a member of the cytochrome b(561) family that encodes an iron-regulated protein. It highly expressed in the duodenal brush border membrane. It has ferric reductase activity and is believed to play a physiological role in dietary iron absorption. [provided by RefSeq, Jul 2008]

Protein Families: Transmembrane

### Product images:



Coomassie blue staining of purified CYBRD1 protein (Cat# [TP309455]). The protein was produced from HEK293T cells transfected with CYBRD1 cDNA clone (Cat# [RC209455]) using MegaTran 2.0 (Cat# [TT210002]).