

## Product datasheet for PH309446

### LYPLA3 (PLA2G15) (NM\_012320) Human Mass Spec Standard

#### Product data:

Product Type:	Mass Spec Standards
Description:	PLA2G15 MS Standard C13 and N15-labeled recombinant protein (NP_036452)
Species:	Human
Expression Host:	HEK293
Expression cDNA Clone or AA Sequence:	RC209446
Predicted MW:	46.7 kDa
Protein Sequence:	>RC209446 protein sequence Red=Cloning site Green=Tags(s)

MGLHLRPYRVGLLPDGLLFLLLLMLLADPALPAGRHPVVLVPGDLGNQLEAKLDKPTVVHYLCSKYTE  
SYFTIWLNLELLLPVIIDCWIDNIRLVYNKTSRATQFPDGDVVRVPGFGKTFSEFLDPSKSSVGSYFHT  
MVESLVGWYTRGEDVRGAPYDWRAPNENGPYFLALREIEEMYQLYGGPVVLVAHSMGNMYTLYFLQR  
QPQAWKDKYIRAFVSLGAPWGGVAKTLRVLASGDNNRIPVIGPLKIREQQRSVSTSWLLPYNYTWSPEK  
VFVQTPTINYTLRDYRKFFQDIGFEDGWLMRQDTEGLVEATMPPGVQLHCLYGTGVPPTDSFYYESFPDR  
DPKICFGDGDGTVNLKSALQCQAWQSRQEHQVLLQELPGSEHIEMLANATTLAYLKRVLG

TRTRPLEQKLI SEEDLAANDILDYKDDDDKV

Tag:	C-Myc/DDK
Purity:	> 80% as determined by SDS-PAGE and Coomassie blue staining
Concentration:	>0.05 µg/µL as determined by microplate BCA method
Labeling Method:	Labeled with [U- <sup>13</sup> C <sub>6</sub> , <sup>15</sup> N <sub>4</sub> ]-L-Arginine and [U- <sup>13</sup> C <sub>6</sub> , <sup>15</sup> N <sub>2</sub> ]-L-Lysine
Buffer:	25 mM Tris-HCl, 100 mM glycine, pH 7.3
Storage:	Store at -80°C. Avoid repeated freeze-thaw cycles.
Stability:	Stable for 3 months from receipt of products under proper storage and handling conditions.
RefSeq:	<u><a href="#">NP_036452</a></u>
RefSeq Size:	2764
RefSeq ORF:	1236
Synonyms:	ACS; GXVPLA2; LLPL; LPLA2; LYPLA3
Locus ID:	23659



[View online »](#)

UniProt ID: [Q8NCC3](#)

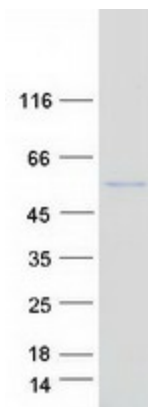
Cytogenetics: 16q22.1

**Summary:** Lysophospholipases are enzymes that act on biological membranes to regulate the multifunctional lysophospholipids. The protein encoded by this gene hydrolyzes lysophosphatidylcholine to glycerophosphorylcholine and a free fatty acid. This enzyme is present in the plasma and thought to be associated with high-density lipoprotein. A later paper contradicts the function of this gene. It demonstrates that this gene encodes a lysosomal enzyme instead of a lysophospholipase and has both calcium-independent phospholipase A2 and transacylase activities. [provided by RefSeq, Jul 2008]

**Protein Families:** Secreted Protein

**Protein Pathways:** Glycerophospholipid metabolism, Lysosome

### Product images:



Coomassie blue staining of purified PLA2G15 protein (Cat# [TP309446]). The protein was produced from HEK293T cells transfected with PLA2G15 cDNA clone (Cat# [RC209446]) using MegaTran 2.0 (Cat# [TT210002]).