

## Product datasheet for PH309444

### SMARCE1 (NM\_003079) Human Mass Spec Standard

#### Product data:

Product Type:	Mass Spec Standards
Description:	SMARCE1 MS Standard C13 and N15-labeled recombinant protein (NP_003070)
Species:	Human
Expression Host:	HEK293
Expression cDNA Clone or AA Sequence:	RC209444
Predicted MW:	46.6 kDa
Protein Sequence:	>RC209444 protein sequence Red=Cloning site Green=Tags(s)

MSKRPSYAPPPTPAPATQMPSTPGFVGYNPYSHLAYNNYRLGGNPGTNSRVTASSGITIPKPPKPPDKPL  
MPYMRYSRKVWDQVKASNPDLKLWEIGKIIGGMWRDLTDEEKQEYLN EYEAEKIEYNESMKAYHNSPAYL  
AYINAKSRAEAAL EEE SRQRQSRMEKGEPYMSIQPAEDPDDYDDGF SMKHTATARFQRNHLISEILSES  
VVPDVRSVVT TARMQVLKRQVQSLMVHQRLKLEAELLQIEERHQEKRRKFLESTDSFNNELKRLCGLKVEV  
DMEKIAAEIAQAEEQARKRQEEREKEAAEQAERSQSSIVPEEEQAANKGEEKKDDENIPMETEETHLEET  
TESQNGEEGTSTPEDKESGQEGVDSMAEEGTSDSNTGSESNSATVEEPPTDPIPEDEKKE

TRTRPLEQKLI SEEDLAANDILDYKDDDDKV

Tag:	C-Myc/DDK
Purity:	> 80% as determined by SDS-PAGE and Coomassie blue staining
Concentration:	>0.05 µg/µL as determined by microplate BCA method
Labeling Method:	Labeled with [U- <sup>13</sup> C <sub>6</sub> , <sup>15</sup> N <sub>4</sub> ]-L-Arginine and [U- <sup>13</sup> C <sub>6</sub> , <sup>15</sup> N <sub>2</sub> ]-L-Lysine
Buffer:	25 mM Tris-HCl, 100 mM glycine, pH 7.3
Storage:	Store at -80°C. Avoid repeated freeze-thaw cycles.
Stability:	Stable for 3 months from receipt of products under proper storage and handling conditions.
RefSeq:	<u><a href="#">NP_003070</a></u>
RefSeq Size:	2425
RefSeq ORF:	1233
Synonyms:	BAF57; CSS5
Locus ID:	6605



[View online »](#)

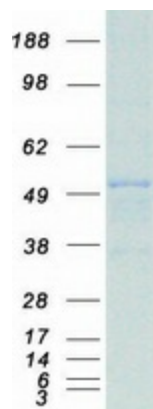
UniProt ID: [Q969G3](#), [A0A024R1S7](#)

Cytogenetics: 17q21.2

**Summary:** The protein encoded by this gene is part of the large ATP-dependent chromatin remodeling complex SWI/SNF, which is required for transcriptional activation of genes normally repressed by chromatin. The encoded protein, either alone or when in the SWI/SNF complex, can bind to 4-way junction DNA, which is thought to mimic the topology of DNA as it enters or exits the nucleosome. The protein contains a DNA-binding HMG domain, but disruption of this domain does not abolish the DNA-binding or nucleosome-displacement activities of the SWI/SNF complex. Unlike most of the SWI/SNF complex proteins, this protein has no yeast counterpart. [provided by RefSeq, Jul 2008]

**Protein Families:** Transcription Factors

### Product images:



Coomassie blue staining of purified SMARCE1 protein (Cat# [TP309444]). The protein was produced from HEK293T cells transfected with SMARCE1 cDNA clone (Cat# [RC209444]) using MegaTran 2.0 (Cat# [TT210002]).