

Product datasheet for PH309433

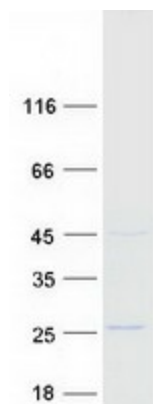
LZIC (NM_032368) Human Mass Spec Standard

Product data:

Product Type:	Mass Spec Standards
Description:	LZIC MS Standard C13 and N15-labeled recombinant protein (NP_115744)
Species:	Human
Expression Host:	HEK293
Expression cDNA Clone or AA Sequence:	RC209433
Predicted MW:	21.5 kDa
Protein Sequence:	>RC209433 protein sequence Red=Cloning site Green=Tags(s) MASRGKTETSKLKQNLEEQLDRLMQQLQDLEECREELDTDEYEETKKETLEQLSEFNDSLKKIMSGNMTL VDELSGMQLAIQAAISQAFKTPVIRLFAKKQPGQLRTRLAEMDRDLMVGKLERDLYTQQKVEILTALRK LGEKLTADDEAFLSANAGAILSQFEKVVSTDLGSGDKILALASFEVEKTKK TRTRPLEQKLISEEDLAANDILDYKDDDDKV
Tag:	C-Myc/DDK
Purity:	> 80% as determined by SDS-PAGE and Coomassie blue staining
Concentration:	>0.05 µg/µL as determined by microplate BCA method
Labeling Method:	Labeled with [U- 13C6, 15N4]-L-Arginine and [U- 13C6, 15N2]-L-Lysine
Buffer:	25 mM Tris-HCl, 100 mM glycine, pH 7.3
Storage:	Store at -80°C. Avoid repeated freeze-thaw cycles.
Stability:	Stable for 3 months from receipt of products under proper storage and handling conditions.
RefSeq:	<u>NP_115744</u>
RefSeq Size:	1484
RefSeq ORF:	570
Locus ID:	84328
UniProt ID:	<u>Q8WZA0, A0A024R4I7</u>
Cytogenetics:	1p36.22



[View online »](#)

Product images:

Coomassie blue staining of purified LZIC protein (Cat# [TP309433]). The protein was produced from HEK293T cells transfected with LZIC cDNA clone (Cat# [RC209433]) using MegaTran 2.0 (Cat# [TT210002]).