

Product datasheet for PH309427

KLC3 (NM_177417) Human Mass Spec Standard

Product data:

Product Type:	Mass Spec Standards
Description:	KLC3 MS Standard C13 and N15-labeled recombinant protein (NP_803136)
Species:	Human
Expression Host:	HEK293
Expression cDNA Clone or AA Sequence:	RC209427
Predicted MW:	55.4 kDa
Protein Sequence:	>RC209427 protein sequence Red =Cloning site Green =Tags(s)

MSVQVAAPGSAGLGPERLSPEELVRQTRQVVQGLEALRAEHHLGAGHLAEALAGQGAAGLEMLEEKQQV
 VSHSLEAIELGLGEAQVLLALSAHVGALEAEKQRLRSQARRLAQENVWLREELEETQRRRLASEESVAQL
 EEEKRHLEFLGQLRQYDPPAESQQSESPPRRDSLASFPEEEEEERKGPEAAGAAAQGGGYEIPARLRTL
 HNLVIQYAGQGRYEVAVPLCRQALEDLERSGGHCHPDVATMLNILALVYRDQNKYEATDLLHDALQIRE
 QTLGPEHPAVALNNLAVLYGKRGYREAELCQRALEIREKVLGADHPDVAKQLNNLALLCQNQGKFE
 DVERHYARALSIYEALGGPHDPNVAKTKNNLASAYLKQNKYQQAEEELYKEILHKEDLPAPLGAPNTGTAG
 DAEQALRRSSSLKIRESIIRRGSEKLVSRRLRGEAAAGAAGMKRAMSLNTLNVDAPRAPGTQFPSWHLDKA
 PRTLSASTQDLSPH

TRTRPLEQKLISEEDLAANDILDYKDDDDKV

Tag:	C-Myc/DDK
Purity:	> 80% as determined by SDS-PAGE and Coomassie blue staining
Concentration:	>0.05 µg/µL as determined by microplate BCA method
Labeling Method:	Labeled with [U- ¹³ C ₆ , ¹⁵ N ₄]-L-Arginine and [U- ¹³ C ₆ , ¹⁵ N ₂]-L-Lysine
Buffer:	25 mM Tris-HCl, 100 mM glycine, pH 7.3
Storage:	Store at -80°C. Avoid repeated freeze-thaw cycles.
Stability:	Stable for 3 months from receipt of products under proper storage and handling conditions.
RefSeq:	<u>NP_803136</u>
RefSeq Size:	1793
RefSeq ORF:	1512


[View online »](#)

Synonyms: KLC2; KLC2L; KLCt; KNS2B

Locus ID: 147700

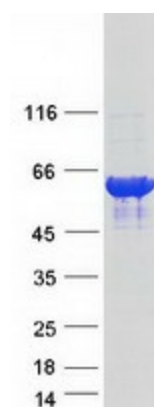
UniProt ID: [Q6P597](#), [A0A024R0V3](#)

Cytogenetics: 19q13.32

Summary: This gene encodes a member of the kinesin light chain gene family. Kinesins are molecular motors involved in the transport of cargo along microtubules, and are composed of two kinesin heavy chain (KHC) and two kinesin light chain (KLC) molecules. KLCs are thought to typically be involved in binding cargo and regulating kinesin activity. In the rat, a protein similar to this gene product is expressed in post-meiotic spermatids, where it associates with structural components of sperm tails and mitochondria. [provided by RefSeq, Jul 2008]

Protein Families: Druggable Genome

Product images:



Coomassie blue staining of purified KLC3 protein (Cat# [TP309427]). The protein was produced from HEK293T cells transfected with KLC3 cDNA clone (Cat# [RC209427]) using MegaTran 2.0 (Cat# [TT210002]).