

## Product datasheet for PH309413

### EXOC3 (NM\_007277) Human Mass Spec Standard

#### Product data:

Product Type:	Mass Spec Standards
Description:	EXOC3 MS Standard C13 and N15-labeled recombinant protein (NP_009208)
Species:	Human
Expression Host:	HEK293
Expression cDNA Clone or AA Sequence:	RC209413
Predicted MW:	85.6 kDa
Protein Sequence:	>RC209413 protein sequence Red=Cloning site Green=Tags(s)

MKETDREAVATAVQRVAGMLQRPDQLDKVEQYRRREARKKASVEARLKAAIQSQLDGVRTGLSQLHNALN  
DVKDIQQSLADVSKDWRQSINTIESLKDVKDAVVQHSQAAAENLNKIFSVPEIVRETQDLIEQGALLQ  
AHRKLMDECSRDLMEYQYRMDSGNTRDRTLHGYFGSTQGLSDELAKQLWMVLQRSLVTVRRDPTLLV  
SVVRIIEREEKIDRRILDRKQTGFVPPGRPKNWKEKMFITLERTVTTRIEGTQADTRESDKMWLVRHLE  
IIRKYVLDLIVAKNLMVQCFFPHYEIFKNLLNMYHQALSTRMQDLASEDLEANEIVSLLTWVLNTYTST  
EMMRNVELAPEVDVGTLEPLLSPHVVELLDTYMSTLTSNIIAWLRKALETDKKDWKETEPEADQDGY  
QTTLPAIVFQMFEQNLQVAAQISEDLTKTKVLVLCLOQMNSFLSRKDEAQLYKEEHLRNQHPHCYVQYM  
IAIINNCQTFKESIVSLKRKYLKNEVEEGVSPSQPSMDGILDIAKEGCSGLLEEVFLDLEQHLNELMTK  
KWL LGSNAVDIICVTVEDYFNDFAKIKKPYKKRMTAEAHRRVVVEYLRAVMQKRISFRSPEERKEGAEM  
VREAEQLRFLFRKLASGFEDVDGYCDTIVAVAEVIKLTDPSSLYLEVSTLVSKYPDIRDDHIGALLAVR  
GDASRDMKQTIMETLEQGPASPSYVPLFKDIVVPSLNVAKLLK

SGPTRTRPLEQKLI SEEDLAANDILDYKDDDDKV

Tag:	C-Myc/DDK
Purity:	> 80% as determined by SDS-PAGE and Coomassie blue staining
Concentration:	>0.05 µg/µL as determined by microplate BCA method
Labeling Method:	Labeled with [U- <sup>13</sup> C <sub>6</sub> , <sup>15</sup> N <sub>4</sub> ]-L-Arginine and [U- <sup>13</sup> C <sub>6</sub> , <sup>15</sup> N <sub>2</sub> ]-L-Lysine
Buffer:	25 mM Tris-HCl, 100 mM glycine, pH 7.3
Storage:	Store at -80°C. Avoid repeated freeze-thaw cycles.
Stability:	Stable for 3 months from receipt of products under proper storage and handling conditions.
RefSeq:	<a href="#">NP_009208</a>



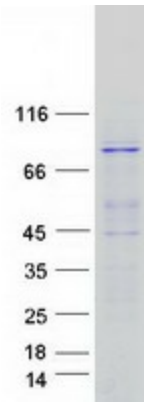
[View online »](#)

RefSeq Size:	2774
RefSeq ORF:	2235
Synonyms:	SEC6; SEC6L1; Sec6p
Locus ID:	11336
UniProt ID:	<a href="#">O60645</a> , <a href="#">A0A024QYZ6</a> , <a href="#">Q69YP2</a>
Cytogenetics:	5p15.33

**Summary:** The protein encoded by this gene is a component of the exocyst complex, a multiple protein complex essential for targeting exocytic vesicles to specific docking sites on the plasma membrane. Though best characterized in yeast, the component proteins and functions of exocyst complex have been demonstrated to be highly conserved in higher eukaryotes. At least eight components of the exocyst complex, including this protein, are found to interact with the actin cytoskeletal remodeling and vesicle transport machinery. The complex is also essential for the biogenesis of epithelial cell surface polarity. [provided by RefSeq, Jul 2008]

**Protein Pathways:** Tight junction

### Product images:



Coomassie blue staining of purified EXOC3 protein (Cat# [TP309413]). The protein was produced from HEK293T cells transfected with EXOC3 cDNA clone (Cat# [RC209413]) using MegaTran 2.0 (Cat# [TT210002]).