

## Product datasheet for PH309406

### Selenophosphate synthetase 1 (SEPHS1) (NM\_012247) Human Mass Spec Standard

#### Product data:

Product Type:	Mass Spec Standards
Description:	SEPHS1 MS Standard C13 and N15-labeled recombinant protein (NP_036379)
Species:	Human
Expression Host:	HEK293
Expression cDNA Clone or AA Sequence:	RC209406
Predicted MW:	42.9 kDa
Protein Sequence:	>RC209406 protein sequence Red=Cloning site Green=Tags(s)
	MSTRESFNPESEYELDKSFRLTRFTELKGTGCKVPQDVLQKLLLESLQENHFQEDEQFLGAVMPRLGIGMDT CVIPLRHGGLSLVQTTDYIYPIVDDPYMMGRIACANVLSLYAMGVTECDNMLMLLGVSNKMTDRERDKV MPLIIQGFKDAEEAGTSVTGGQTVLNPWIVLGGVATTVCQPNEFIMPDNAVPGDVLVLTGPLGTQVAVA VHQWLDIPEKWNKIKLVVTQEDVELAYQEAMMMARLNRTAAGLMHTFNAHAATDITGFGILGHAQNLAK QQRNEVSFVIHNLVPLAKMAAVSKACGNMFGMLHGTCPETSGLLIICLPREQAARFCAEIKSPKYGEGHQ AWIIGIVEKGNRTARIIDKPRIIEVAPQVATQNVNPTPGATS
	TRTRPLEQKLI SEEDLAANDILDYKDDDDKV
Tag:	C-Myc/DDK
Purity:	> 80% as determined by SDS-PAGE and Coomassie blue staining
Concentration:	>0.05 µg/µL as determined by microplate BCA method
Labeling Method:	Labeled with [U- <sup>13</sup> C <sub>6</sub> , <sup>15</sup> N <sub>4</sub> ]-L-Arginine and [U- <sup>13</sup> C <sub>6</sub> , <sup>15</sup> N <sub>2</sub> ]-L-Lysine
Buffer:	25 mM Tris-HCl, 100 mM glycine, pH 7.3
Storage:	Store at -80°C. Avoid repeated freeze-thaw cycles.
Stability:	Stable for 3 months from receipt of products under proper storage and handling conditions.
RefSeq:	<a href="#">NP_036379</a>
RefSeq Size:	3275
RefSeq ORF:	1176
Synonyms:	SELD; SPS; SPS1
Locus ID:	22929



[View online »](#)

UniProt ID: [P49903](#)

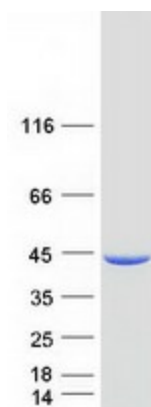
Cytogenetics: 10p13

Summary: This gene encodes an enzyme that synthesizes selenophosphate from selenide and ATP. Selenophosphate is the selenium donor used to synthesize selenocysteine, which is co-translationally incorporated into selenoproteins at in-frame UGA codons. [provided by RefSeq, Sep 2010]

Protein Families: Stem cell - Pluripotency

Protein Pathways: Metabolic pathways, Selenoamino acid metabolism

### Product images:



Coomassie blue staining of purified SEPHS1 protein (Cat# [TP309406]). The protein was produced from HEK293T cells transfected with SEPHS1 cDNA clone (Cat# [RC209406]) using MegaTran 2.0 (Cat# [TT210002]).