

Product datasheet for PH309389

LCN6 (NM_198946) Human Mass Spec Standard

Product data:

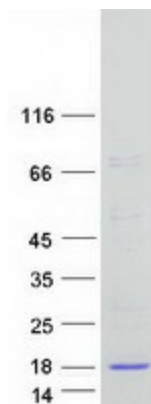
Product Type:	Mass Spec Standards
Description:	LCN6 MS Standard C13 and N15-labeled recombinant protein (NP_945184)
Species:	Human
Expression Host:	HEK293
Expression cDNA Clone or AA Sequence:	RC209389
Predicted MW:	18 kDa
Protein Sequence:	>RC209389 protein sequence Red=Cloning site Green=Tags(s) MGGLLLAAFLALVSVPRQAVWLGRLDPEQLLGPWYVLAVASREKGFAMEKDMKNVVGVVVTLTPENLR TLSSQHGLGGCDQSYMDLIKRNSGWVFENPSIGVLELWVWLNFRDYAIIIFTQLEFGDEPFNTVELYSLT ETASQEAMGLFTKWSRSLGFLSQ TRTRPLEQKLISEEDLAANDILDYKDDDDKV
Tag:	C-Myc/DDK
Purity:	> 80% as determined by SDS-PAGE and Coomassie blue staining
Concentration:	>0.05 µg/µL as determined by microplate BCA method
Labeling Method:	Labeled with [U- 13C6, 15N4]-L-Arginine and [U- 13C6, 15N2]-L-Lysine
Buffer:	25 mM Tris-HCl, 100 mM glycine, pH 7.3
Storage:	Store at -80°C. Avoid repeated freeze-thaw cycles.
Stability:	Stable for 3 months from receipt of products under proper storage and handling conditions.
RefSeq:	NP_945184
RefSeq Size:	738
RefSeq ORF:	489
Synonyms:	hLcn5; LCN5; UNQ643
Locus ID:	158062
UniProt ID:	P62502 , A0A024R8I9



[View online »](#)

Cytogenetics: 9q34.3
Summary: May play a role in male fertility.[UniProtKB/Swiss-Prot Function]
Protein Families: Secreted Protein

Product images:



Coomassie blue staining of purified LCN6 protein (Cat# [TP309389]). The protein was produced from HEK293T cells transfected with LCN6 cDNA clone (Cat# [RC209389]) using MegaTran 2.0 (Cat# [TT210002]).