

## Product datasheet for PH309385

### SKP1 (NM\_170679) Human Mass Spec Standard

#### Product data:

Product Type:	Mass Spec Standards
Description:	SKP1 MS Standard C13 and N15-labeled recombinant protein (NP_733779)
Species:	Human
Expression Host:	HEK293
Expression cDNA Clone or AA Sequence:	RC209385
Predicted MW:	18.5 kDa
Protein Sequence:	>RC209385 representing NM_170679 Red=Cloning site Green=Tags(s)  MPSIKLQSSDGEIFEVDVEIAKQSVTIKTMLEDLGMDDEGDDDPVPLPNVNAAILKKVIQWCTHHKDDPP PPEDDENKEKRTDDIPVWDQEFLLKVDQGLFELILAANYLDIKGLLDVTCTVANMIKKGKTPPEEIRKTFN IKNDFTEEEEAQVRKENQWCEEK  TRTRPLEQKLISEEDLAANDILDYKDDDDKV
Tag:	C-Myc/DDK
Purity:	> 80% as determined by SDS-PAGE and Coomassie blue staining
Concentration:	>0.05 µg/µL as determined by microplate BCA method
Labeling Method:	Labeled with [U- 13C6, 15N4]-L-Arginine and [U- 13C6, 15N2]-L-Lysine
Buffer:	25 mM Tris-HCl, 100 mM glycine, pH 7.3
Storage:	Store at -80°C. Avoid repeated freeze-thaw cycles.
Stability:	Stable for 3 months from receipt of products under proper storage and handling conditions.
RefSeq:	<a href="#">NP_733779</a>
RefSeq Size:	1486
RefSeq ORF:	489
Synonyms:	EMC19; OCP-II; OCP2; p19A; SKP1A; TCEB1L
Locus ID:	6500
UniProt ID:	<a href="#">P63208</a>



[View online »](#)

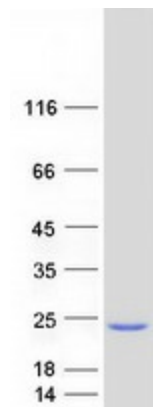
**Cytogenetics:** 5q31.1

**Summary:** This gene encodes a component of SCF complexes, which are composed of this protein, cullin 1, a ring-box protein, and one member of the F-box family of proteins. This protein binds directly to the F-box motif found in F-box proteins. SCF complexes are involved in the regulated ubiquitination of specific protein substrates, which targets them for degradation by the proteasome. Specific F-box proteins recognize different target protein(s), and many specific SCF substrates have been identified including regulators of cell cycle progression and development. Studies have also characterized the protein as an RNA polymerase II elongation factor. Alternative splicing of this gene results in two transcript variants. A related pseudogene has been identified on chromosome 7. [provided by RefSeq, Jul 2008]

**Protein Families:** Druggable Genome

**Protein Pathways:** Cell cycle, Oocyte meiosis, TGF-beta signaling pathway, Ubiquitin mediated proteolysis, Wnt signaling pathway

### Product images:



Coomassie blue staining of purified SKP1 protein (Cat# [TP309385]). The protein was produced from HEK293T cells transfected with SKP1 cDNA clone (Cat# [RC209385]) using MegaTran 2.0 (Cat# [TT210002]).