

Product datasheet for PH309372

C6orf58 (NM_001010905) Human Mass Spec Standard

Product data:

Product Type:	Mass Spec Standards
Description:	C6orf58 MS Standard C13 and N15-labeled recombinant protein (NP_001010905)
Species:	Human
Expression Host:	HEK293
Expression cDNA Clone or AA Sequence:	RC209372
Predicted MW:	37.9 kDa
Protein Sequence:	>RC209372 protein sequence Red=Cloning site Green=Tags(s)

MAFLPSWVCVLVGSFSASLAGTSNLSETEPPLWKESPGQLSDYRVENSMYIINPWVYLERMGMYKIILNQ
TARYFAKFAPDNEQNILWGLPLQYGWQYRTGRLADPTRRTNCGYESGDHMCISVDSWWADLNYFLSSLPF
LAAVDSGVMGISSDQVRLPPPKNERKFCYDVSSCRSSFETMKNKWNFTFYQLQSPFSKFDLLKYLWAA
HTSTLADNIKSFEDRYDYYSKAEAHFERSWVLAVDHLAAVLFPTTLIRSYKFQKGMPPRILLNTDVAPFI
SDFTAQNVVLLVLLNMLDNVDKISIGYLCTEKSINVYRDHSESSRSYGNNS

TRTRPLEQKLISEEDLAANDILDYKDDDDKV

Tag:	C-Myc/DDK
Purity:	> 80% as determined by SDS-PAGE and Coomassie blue staining
Concentration:	>0.05 µg/µL as determined by microplate BCA method
Labeling Method:	Labeled with [U- ¹³ C ₆ , ¹⁵ N ₄]-L-Arginine and [U- ¹³ C ₆ , ¹⁵ N ₂]-L-Lysine
Buffer:	25 mM Tris-HCl, 100 mM glycine, pH 7.3
Storage:	Store at -80°C. Avoid repeated freeze-thaw cycles.
Stability:	Stable for 3 months from receipt of products under proper storage and handling conditions.
RefSeq:	<u>NP_001010905</u>
RefSeq Size:	1201
RefSeq ORF:	990
Synonyms:	LEG1
Locus ID:	352999



[View online »](#)

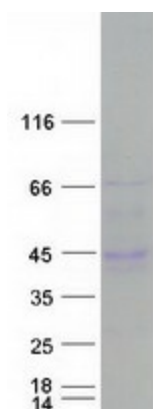
UniProt ID: [Q6P5S2](#)

Cytogenetics: 6q22.33

Summary: May be involved in early liver development.[UniProtKB/Swiss-Prot Function]

Protein Families: Secreted Protein

Product images:



Coomassie blue staining of purified C6orf58 protein (Cat# [TP309372]). The protein was produced from HEK293T cells transfected with C6orf58 cDNA clone (Cat# [RC209372]) using MegaTran 2.0 (Cat# [TT210002]).