

## Product datasheet for PH309363

### LCN1 (NM\_002297) Human Mass Spec Standard

#### Product data:

Product Type:	Mass Spec Standards
Description:	LCN1 MS Standard C13 and N15-labeled recombinant protein (NP_002288)
Species:	Human
Expression Host:	HEK293
Expression cDNA Clone or AA Sequence:	RC209363
Predicted MW:	19.3 kDa
Protein Sequence:	>RC209363 protein sequence Red=Cloning site Green=Tags(s)  MKPLLLAVSLGLIAALQAHLLASDEEIQDVSGTWYLKAMTVDREFPEMNLESVTPMTLTTLEGGNLEAK VTMLISGRQCQEVKAVLEKTDEPGKYTADGGKHVAYIIRSHVKDHYIFYCEGELHGKPVRGVGLVGRDPKN NLEALEDFEKAAGARGLSTESILIPRQSETCSPGSD  TRTRPLEQKLI SEEDLAANDILDYKDDDDKV
Tag:	C-Myc/DDK
Purity:	> 80% as determined by SDS-PAGE and Coomassie blue staining
Concentration:	>0.05 µg/µL as determined by microplate BCA method
Labeling Method:	Labeled with [U- <sup>13</sup> C <sub>6</sub> , <sup>15</sup> N <sub>4</sub> ]-L-Arginine and [U- <sup>13</sup> C <sub>6</sub> , <sup>15</sup> N <sub>2</sub> ]-L-Lysine
Buffer:	25 mM Tris-HCl, 100 mM glycine, pH 7.3
Storage:	Store at -80°C. Avoid repeated freeze-thaw cycles.
Stability:	Stable for 3 months from receipt of products under proper storage and handling conditions.
RefSeq:	<a href="#">NP_002288</a>
RefSeq Size:	789
RefSeq ORF:	528
Synonyms:	PMFA; TLC; TP; VEGP
Locus ID:	3933
UniProt ID:	<a href="#">P31025</a> , <a href="#">A0A024R8D7</a>



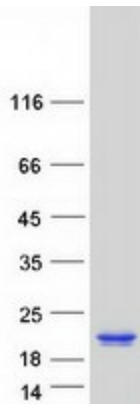
[View online »](#)

**Cytogenetics:** 9q34.3

**Summary:** This gene encodes a member of the lipocalin family of small secretory proteins. Lipocalins are extracellular transport proteins that bind to a variety of hydrophobic ligands. The encoded protein is the primary lipid binding protein in tears and is overproduced in response to multiple stimuli including infection and stress. The encoded protein may be a marker for chromosome aneuploidy as well as an autoantigen in Sjogren's syndrome. Alternatively spliced transcript variants encoding multiple isoforms have been observed for this gene, and two pseudogenes of this gene are also located on the long arm of chromosome 9. [provided by RefSeq, Nov 2011]

**Protein Families:** Secreted Protein

### Product images:



Coomassie blue staining of purified LCN1 protein (Cat# [TP309363]). The protein was produced from HEK293T cells transfected with LCN1 cDNA clone (Cat# [RC209363]) using MegaTran 2.0 (Cat# [TT210002]).