

## Product datasheet for PH309357

### NSMCE4A (NM\_017615) Human Mass Spec Standard

#### Product data:

Product Type:	Mass Spec Standards
Description:	NSMCE4A MS Standard C13 and N15-labeled recombinant protein (NP_060085)
Species:	Human
Expression Host:	HEK293
Expression cDNA Clone or AA Sequence:	RC209357
Predicted MW:	44.2 kDa
Protein Sequence:	>RC209357 protein sequence <span style="color: red;">Red</span> =Cloning site <span style="color: green;">Green</span> =Tags(s)

MSGDSSGRGPEGRGRGRDPRDRTRSRSRSPSPRSRRGSARERREAPERPSLEDTEPSDSDGDEMMDP  
 ASLEAEADQGLCRQIRHQYRALINSVQQNREDILNAGDKLTEVLEEANTLFNEVSRAREAVLDAHFLVLA  
 SDLGKEKAKQLRSDLSSFDMLRYVETLLTHMGVNPLEAEELIRDEDSPDFEFIVYDSWKITGRTAENTFN  
 KTHTFHLLGSIYGECPVPKPRVDRPKVPVIEERAMPAQLRRMEESHQEATEKEVERILGLLQTYFRE  
 DPDTMSFFDFVVDPHSFPRTVENIFHVSFIIRDGFARILDQDRLPVIEPVSINEENEGFEHNTQVRNQ  
 GIIALSYRDWEIVKTFEISEPVITPSQRQKPSA

TRTRPLEQKLISEEDLAANDILDYKDDDDKV

Tag:	C-Myc/DDK
Purity:	> 80% as determined by SDS-PAGE and Coomassie blue staining
Concentration:	>0.05 µg/µL as determined by microplate BCA method
Labeling Method:	Labeled with [U- <sup>13</sup> C <sub>6</sub> , <sup>15</sup> N <sub>4</sub> ]-L-Arginine and [U- <sup>13</sup> C <sub>6</sub> , <sup>15</sup> N <sub>2</sub> ]-L-Lysine
Buffer:	25 mM Tris-HCl, 100 mM glycine, pH 7.3
Storage:	Store at -80°C. Avoid repeated freeze-thaw cycles.
Stability:	Stable for 3 months from receipt of products under proper storage and handling conditions.
RefSeq:	<u>NP_060085</u>
RefSeq Size:	1420
RefSeq ORF:	1155
Synonyms:	C10orf86; NS4EA; NSE4A
Locus ID:	54780

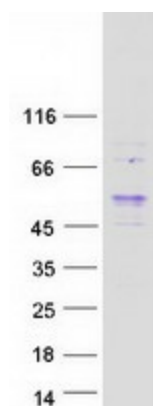

[View online »](#)

UniProt ID: [Q9NXX6](#)

Cytogenetics: 10q26.13

**Summary:** Component of the SMC5-SMC6 complex, a complex involved in DNA double-strand breaks by homologous recombination. The complex may promote sister chromatid homologous recombination by recruiting the SMC1-SMC3 cohesin complex to double-strand breaks. The complex is required for telomere maintenance via recombination in ALT (alternative lengthening of telomeres) cell lines and mediates sumoylation of shelterin complex (telosome) components which is proposed to lead to shelterin complex disassembly in ALT-associated PML bodies (APBs). Is involved in positive regulation of response to DNA damage stimulus.[UniProtKB/Swiss-Prot Function]

## Product images:



Coomassie blue staining of purified NSMCE4A protein (Cat# [TP309357]). The protein was produced from HEK293T cells transfected with NSMCE4A cDNA clone (Cat# [RC209357]) using MegaTran 2.0 (Cat# [TT210002]).