

Product datasheet for PH309355

LACRT (NM_033277) Human Mass Spec Standard

Product data:

Product Type:	Mass Spec Standards
Description:	LACRT MS Standard C13 and N15-labeled recombinant protein (NP_150593)
Species:	Human
Expression Host:	HEK293
Expression cDNA Clone or AA Sequence:	RC209355
Predicted MW:	14.2 kDa
Protein Sequence:	>RC209355 protein sequence Red=Cloning site Green=Tags(s) MKFTLLFLAAVAGALVYAEDASSDSTGADPAQEAGTSKPNEEISGPAEPASPPETTTTAQETSAAAVQG TAKVTSSRQELNPLKSIYEKSIILLTEQALAKAGKGMHGGVPGGKQFIENGSEFAQKLLKKFSLLKPWA TRTRPLEQKLISEEDLAANDILDYKDDDDKV
Tag:	C-Myc/DDK
Purity:	> 80% as determined by SDS-PAGE and Coomassie blue staining
Concentration:	>0.05 µg/µL as determined by microplate BCA method
Labeling Method:	Labeled with [U- 13C6, 15N4]-L-Arginine and [U- 13C6, 15N2]-L-Lysine
Buffer:	25 mM Tris-HCl, 100 mM glycine, pH 7.3
Storage:	Store at -80°C. Avoid repeated freeze-thaw cycles.
Stability:	Stable for 3 months from receipt of products under proper storage and handling conditions.
RefSeq:	NP_150593
RefSeq Size:	508
RefSeq ORF:	414
Locus ID:	90070
UniProt ID:	Q9GZ78
Cytogenetics:	12q13.2



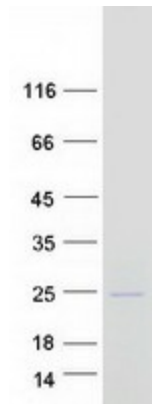
[View online »](#)

Summary:

The protein encoded by this gene is highly expressed in the lacrimal glands and localized primarily to secretory granules and secretory fluid. It augments lacrimal acinar cell secretion, promotes ductal cell proliferation, and stimulates signaling through tyrosine phosphorylation and release of calcium. [provided by RefSeq, Jul 2008]

Protein Families:

Secreted Protein

Product images:

Coomassie blue staining of purified LACRT protein (Cat# [TP309355]). The protein was produced from HEK293T cells transfected with LACRT cDNA clone (Cat# [RC209355]) using MegaTran 2.0 (Cat# [TT210002]).