

## Product datasheet for PH309351

### XAGE3 (NM\_130776) Human Mass Spec Standard

#### Product data:

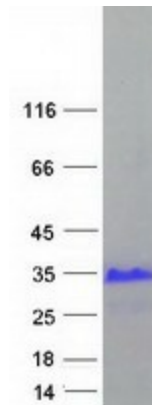
Product Type:	Mass Spec Standards
Description:	XAGE3 MS Standard C13 and N15-labeled recombinant protein (NP_570132)
Species:	Human
Expression Host:	HEK293
Expression cDNA Clone or AA Sequence:	RC209351
Predicted MW:	12.3 kDa
Protein Sequence:	>RC209351 protein sequence Red=Cloning site Green=Tags(s)  MIWRGRSTYRPRRRSVPPPELIGPMLEPGDEEPQQEPPPTESRDPAPGQEREEDQGAAETQVPDLEADL QELSQSKTGGECCGNGPDDQGKILPKSEQFKMPEGGDRQPQV  TRTRPLEQKLISEEDLAANDILDYKDDDDKV
Tag:	C-Myc/DDK
Purity:	> 80% as determined by SDS-PAGE and Coomassie blue staining
Concentration:	>0.05 µg/µL as determined by microplate BCA method
Labeling Method:	Labeled with [U- 13C6, 15N4]-L-Arginine and [U- 13C6, 15N2]-L-Lysine
Buffer:	25 mM Tris-HCl, 100 mM glycine, pH 7.3
Storage:	Store at -80°C. Avoid repeated freeze-thaw cycles.
Stability:	Stable for 3 months from receipt of products under proper storage and handling conditions.
RefSeq:	<a href="#">NP_570132</a>
RefSeq Size:	493
RefSeq ORF:	333
Synonyms:	CT12.3a; CT12.3b; GAGED4; PLAC6; pp9012; XAGE-3
Locus ID:	170626
UniProt ID:	<a href="#">Q8WTP9</a> , <a href="#">A0A0A0MR60</a>
Cytogenetics:	Xp11.22



[View online »](#)

**Summary:**

This gene is a member of the XAGE subfamily, which belongs to the GAGE family. The GAGE genes are expressed in a variety of tumors and in some fetal and reproductive tissues. This gene is expressed in placenta and fetal liver/spleen, and may function in inhibiting cancer cell growth. The protein encoded by this gene shares a sequence similarity with other GAGE/PAGE proteins. Because of the expression pattern and the sequence similarity, this protein also belongs to a family of CT (cancer-testis) antigens. Alternative splicing of this gene generates 2 transcript variants differing in the 5' UTR. [provided by RefSeq, Jul 2008]

**Product images:**

Coomassie blue staining of purified XAGE3 protein (Cat# [TP309351]). The protein was produced from HEK293T cells transfected with XAGE3 cDNA clone (Cat# [RC209351]) using MegaTran 2.0 (Cat# [TT210002]).