

## Product datasheet for PH309350

### Cystatin SA (CST2) (NM\_001322) Human Mass Spec Standard

#### Product data:

Product Type:	Mass Spec Standards
Description:	CST2 MS Standard C13 and N15-labeled recombinant protein (NP_001313)
Species:	Human
Expression Host:	HEK293
Expression cDNA Clone or AA Sequence:	RC209350
Predicted MW:	16.4 kDa
Protein Sequence:	>RC209350 protein sequence Red=Cloning site Green=Tags(s)  MAWPLCTLLLLLATQAVALLAWSPQEEDRIIEGGIYDADLNDERVQRALHFVISEYNKATEDEYYRRLLRV LRAREQIVGGVNYFFDIEVGRITCKSQPNLDTCAFHEQPQLKQKQLCSFQIYEVWPEDRMSLVNSRCQE A  TRTRPLEQKLISEEDLAANDILDYKDDDDKV
Tag:	C-Myc/DDK
Purity:	> 80% as determined by SDS-PAGE and Coomassie blue staining
Concentration:	>0.05 µg/µL as determined by microplate BCA method
Labeling Method:	Labeled with [U- <sup>13</sup> C <sub>6</sub> , <sup>15</sup> N <sub>4</sub> ]-L-Arginine and [U- <sup>13</sup> C <sub>6</sub> , <sup>15</sup> N <sub>2</sub> ]-L-Lysine
Buffer:	25 mM Tris-HCl, 100 mM glycine, pH 7.3
Storage:	Store at -80°C. Avoid repeated freeze-thaw cycles.
Stability:	Stable for 3 months from receipt of products under proper storage and handling conditions.
RefSeq:	<a href="#">NP_001313</a>
RefSeq Size:	694
RefSeq ORF:	423
Locus ID:	1470
UniProt ID:	<a href="#">P09228</a>
Cytogenetics:	20p11.21



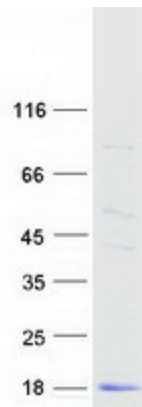
[View online »](#)

**Summary:**

The cystatin superfamily encompasses proteins that contain multiple cystatin-like sequences. Some of the members are active cysteine protease inhibitors, while others have lost or perhaps never acquired this inhibitory activity. There are three inhibitory families in the superfamily, including the type 1 cystatins (stefins), type 2 cystatins and the kininogens. The type 2 cystatin proteins are a class of cysteine proteinase inhibitors found in a variety of human fluids and secretions, where they appear to provide protective functions. The cystatin locus on chromosome 20 contains the majority of the type 2 cystatin genes and pseudogenes. This gene is located in the cystatin locus and encodes a secreted thiol protease inhibitor found at high levels in saliva, tears and seminal plasma. [provided by RefSeq, Jul 2008]

**Protein Families:**

Secreted Protein

**Product images:**

Coomassie blue staining of purified CST2 protein (Cat# [TP309350]). The protein was produced from HEK293T cells transfected with CST2 cDNA clone (Cat# [RC209350]) using MegaTran 2.0 (Cat# [TT210002]).