

Product datasheet for PH309324

VWA1 (NM_022834) Human Mass Spec Standard

Product data:

Product Type:	Mass Spec Standards
Description:	VWA1 MS Standard C13 and N15-labeled recombinant protein (NP_073745)
Species:	Human
Expression Host:	HEK293
Expression cDNA Clone or AA Sequence:	RC209324
Predicted MW:	46.8 kDa
Protein Sequence:	>RC209324 protein sequence Red=Cloning site Green=Tags(s)

MLPWTALGLALSLRLALARSGAERGPPASAPRGDLMFLLDSSASVSHYEF SRVREFVQQLVAPLPLGTGA
LRASLVHVGSRPYTEFPFGQHSSGEEAAQDAVRASAQRMGDTHTGLALVYAKEQLFAEASGARPGVPKVLV
WYTDGSSDPVGPMPQELKDLGVTVFIVSTGRGNFLELSAAASAPAEKHLHFVDVDDLHIIVQELRGSIL
DAMRPQQLHATEITSSGFRLAWPPLL TADSGYYVLELVPSAQPGAARRQQLPGNATDWIAGLDPD TDYD
VALVPESNVRLLRPQILRVTRPGEAGPGASGPESGAGPAPTQLAALPAPEEAGPERIVISHARPRSLRV
SWAPALGSAAALGYHVQFGPLRGGEAQRVEVPAGRNCTTLQGLAPGTAYLVTVTAAFRSGRESALSAKAC
TPDGPRPRPRPVPRAPTGTASREP

TRTRPLEQKLI SEEDLAANDILDYKDDDDKV

Tag:	C-Myc/DDK
Purity:	> 80% as determined by SDS-PAGE and Coomassie blue staining
Concentration:	>0.05 µg/µL as determined by microplate BCA method
Labeling Method:	Labeled with [U- ¹³ C ₆ , ¹⁵ N ₄]-L-Arginine and [U- ¹³ C ₆ , ¹⁵ N ₂]-L-Lysine
Buffer:	25 mM Tris-HCl, 100 mM glycine, pH 7.3
Storage:	Store at -80°C. Avoid repeated freeze-thaw cycles.
Stability:	Stable for 3 months from receipt of products under proper storage and handling conditions.
RefSeq:	<u>NP_073745</u>
RefSeq Size:	4659
RefSeq ORF:	1335
Synonyms:	WARP



[View online »](#)

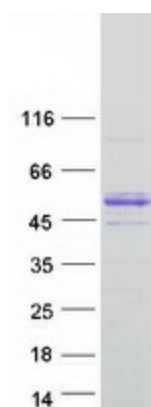
Locus ID: 64856

UniProt ID: [Q6PCB0](#)

Cytogenetics: 1p36.33

Summary: VWA1 belongs to the von Willebrand factor (VWF; MIM 613160) A (VWFA) domain superfamily of extracellular matrix proteins and appears to play a role in cartilage structure and function (Fitzgerald et al., 2002 [PubMed 12062410]).[supplied by OMIM, Nov 2010]

Product images:



Coomassie blue staining of purified VWA1 protein (Cat# [TP309324]). The protein was produced from HEK293T cells transfected with VWA1 cDNA clone (Cat# [RC209324]) using MegaTran 2.0 (Cat# [TT210002]).