

Product datasheet for PH309322

PDXDC1 (NM_015027) Human Mass Spec Standard

Product data:

Product Type:	Mass Spec Standards
Description:	PDXDC1 MS Standard C13 and N15-labeled recombinant protein (NP_055842)
Species:	Human
Expression Host:	HEK293
Expression cDNA Clone or AA Sequence:	RC209322
Predicted MW:	86.5 kDa
Protein Sequence:	>RC209322 representing NM_015027 Red=Cloning site Green=Tags(s)

MDASLEKIADPTLAEMGKNLKEAVKMLEDSQRRTEEENGKKLISGDIPGPLQSGSQDMVSILQLVQNLMH
GDEDEEPQSPRIQNIQEQGHMALLGHSLGAYISTLDKEKLRKLTTRILSDTTLWLCRIFRYENGCAFYHE
EEREGLAKICRLAIHSRYEDFVVDGFNVLNKKPVIYLSAAARPGLGQYLCNQLGLPFPCLCRVPCNTVF
GSQHQMDVAFLEKLIKDDIERGRLPLLLVANAGTAAVGHGTDKIGRLKELCEQYGIWLHVEGVNLTALALG
YVSSSVLAAAKCDSMTMTPGPWGLPAVPAVTL YKHDDPALTLVAGLTSNKPTDKLRALPLWLSLQYLGL
DGFVERIKHACQLSQRLQESLKEVNYIKILVEDELSPPVVFRRFQELPGSDPVFKAVPVPNMTPSGVGR
ERHSCDALNRWLGELKQLVPASGLTVMDEAEAGTCLRF SPLMTAAVLGTRGEDVDQLVACIESKLPVLC
CTLQLREEFKQVEATAGLLYVDDPNWSGIGVRYEHANDDKSSLKSDPEGENIHAGLLKKLNELESDLT
FKIGPEYKSMKSCLYVGMASDNVDAEELVETIAATAREIEENSRLLENMTEVVRKGIQEAQVELQKASEE
RLLLEEVLRQIPVVGSVLWVSPVQALQKGRFNLTAGSLESTEPYVYKAQGAGVTL PPTPSGSRKQQR
LPGQKPFKRSLRGSDALSETSSVSHIEDLEKVERLSSGPEQITLEASSTEGHPGASPQHTDQTEAFQKG
VPHPEDDHSQVEGPESLR

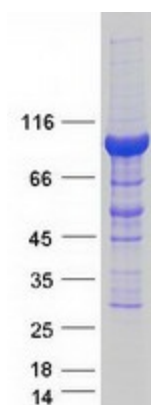
SGPTRRRLEQKLISEEDLAANDILDYKDDDDKV

Tag:	C-Myc/DDK
Purity:	> 80% as determined by SDS-PAGE and Coomassie blue staining
Concentration:	>0.05 µg/µL as determined by microplate BCA method
Labeling Method:	Labeled with [U- ¹³ C ₆ , ¹⁵ N ₄]-L-Arginine and [U- ¹³ C ₆ , ¹⁵ N ₂]-L-Lysine
Buffer:	25 mM Tris-HCl, 100 mM glycine, pH 7.3
Storage:	Store at -80°C. Avoid repeated freeze-thaw cycles.
Stability:	Stable for 3 months from receipt of products under proper storage and handling conditions.
RefSeq:	NP_055842



[View online >](#)

RefSeq Size:	4512
RefSeq ORF:	2364
Synonyms:	LP8165
Locus ID:	23042
UniProt ID:	<u>Q6P996</u> , <u>Q6XYB5</u>
Cytogenetics:	16p13.11

Product images:

Coomassie blue staining of purified PDXDC1 protein (Cat# [TP309322]). The protein was produced from HEK293T cells transfected with PDXDC1 cDNA clone (Cat# [RC209322]) using MegaTran 2.0 (Cat# [TT210002]).