

Product datasheet for PH309318

SEL1L3 (NM_015187) Human Mass Spec Standard

Product data:

Product Type:	Mass Spec Standards
Description:	SEL1L3 MS Standard C13 and N15-labeled recombinant protein (NP_056002)
Species:	Human
Expression Host:	HEK293
Expression cDNA Clone or AA Sequence:	RC209318
Predicted MW:	128.6 kDa
Protein Sequence:	>Peptide sequence encoded by RC209318 Blue=ORF Red=Cloning site Green=Tag(s)

MQRRGAGLGWPRQQQPPPLAVGPRAAAMVPSGGVPQGLGGRSACALLLLCYLNVVPSLGRQTSLTTS
VIPKAEQSVAYKDFIYFTVFEGNVRNVSEVSEYLCSPQCVVNLEAVVSSEFRSSIPVYKKRWKNEKHL
HTSRTQIVHVKFPSIMVYRDDYFIRHSISVSAVIVRAWITHKYSGRDWNVWKEENLLHAVAKNYTLLQT
IPPFERPFKDHQVCLWNGYIWNLRANRIPQCPLNDVVALLGFPYASSGENTGIVKFFPRFRNRELE
ATRRQMDYPVFTVSLWLYLLHYCKANLCGILYFVDSNEMYGTPSVFLTEEGYLHIQMHLVKGEDLAVK
TKFIIPLKEWFRLDISFNGGQIVVTTSIGQDLKSYHNQTSIFREDFHYNDTAGYFIIIGGSRYVAGIEGF
FGPLKYRRLRSLHPAQIFNPLLEKQLAEQIKLYERCAEVQEI VSVYASAAKHGGERQEACHLHNSYLD
LQRRYGRPSMCRAFPWEKELKDKHPSLFQALLEMDLLTVPRNQNESVSEIGGKIFEKAVKRLSSIDGLH
QISSIVPFLTDSSCCGYHKASYLAVFYETGLNVPRDQLQGMLYSLVGGQGSERLSSMNLGKYHQGID
NYPLDWELSYAAYSNIATKTPLDQHTLQGDQAYVETIRLKDDEILKVQTKEDGDVFMWLKHEATRGNA
AQORLAQMLFWGQQGVAKNPEAAIEWYAKGALETEDPALIYDYAIVLFGQGQVKKNRRLEALMLKKAAS
KGLHQAVNGLGWYYHKFKKNYAKAAKYWLKAEEMGNPDASYNLGVLHLDGIFPGVPGRNQTLAGEYFHK
AAQGGHMEGTLWCSLYYITGNLETFPRDPEKAVVAKHVAEKNGYLGHVIRKGLNAYLEGSWHEALLY
VLAAETGIEVSQTNLAHICEERPDARRYLGVNCVWRYNFSVFQIDAPSFAYLKMGDLYYGHQNSQ
DLELSVQMYAQAALDGSQGFNLALLIEGTIIPHHILDFLEIDSTLHNNISILQELYERCWSHSNE
ESFSPCSLAWLYLHLRLLWGAILHSALIYFLGTFLLSILIAWTVQYFQSVSASDPPRPSQASPDAT
TASPAVTPAADASDQDQPTVTNNPEPRG
TRTRPLEQKLI SEEDLAANDILDYKDDDDKV

Recombinant protein using RC209318 also available, [TP309318](#)

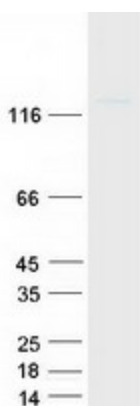
Tag:	C-Myc/DDK
Purity:	> 80% as determined by SDS-PAGE and Coomassie blue staining
Concentration:	>0.05 µg/µL as determined by microplate BCA method
Labeling Method:	Labeled with [U- ¹³ C ₆ , ¹⁵ N ₄]-L-Arginine and [U- ¹³ C ₆ , ¹⁵ N ₂]-L-Lysine



[View online »](#)

Buffer:	25 mM Tris-HCl, 100 mM glycine, pH 7.3
Storage:	Store at -80°C. Avoid repeated freeze-thaw cycles.
Stability:	Stable for 3 months from receipt of products under proper storage and handling conditions.
RefSeq:	NP_056002
RefSeq Size:	4543
RefSeq ORF:	2937
Synonyms:	Sel-1L3
Locus ID:	23231
UniProt ID:	Q68CR1
Cytogenetics:	4p15.2
Protein Families:	Transmembrane

Product images:



Coomassie blue staining of purified SEL1L3 protein (Cat# [TP309318]). The protein was produced from HEK293T cells transfected with SEL1L3 cDNA clone (Cat# [RC209318]) using MegaTran 2.0 (Cat# [TT210002]).