

Product datasheet for PH309280

TMEM88 (NM_203411) Human Mass Spec Standard

Product data:

Product Type:	Mass Spec Standards
Description:	TMEM88 MS Standard C13 and N15-labeled recombinant protein (NP_981956)
Species:	Human
Expression Host:	HEK293
Expression cDNA Clone or AA Sequence:	RC209280
Predicted MW:	17.1 kDa
Protein Sequence:	>RC209280 representing NM_203411 Red=Cloning site Green=Tags(s) MADVPGAQRVAVPGDGPEDRPLDCWACAVLVTAQNLLVAAFNLLLLVLVLTILLPAVTMLGFGFLCHSQ FLRSQAPPCTAHLRDPGFTALLVTGFLLLVPLLVLALASYRRLCLRLRLADCLVPYSRALYRRRRAPQPR QIRASPGSQAVPTSGKVWV TRTRPLEQKLI SEEDLAANDILDYKDDDDKV
Tag:	C-Myc/DDK
Purity:	> 80% as determined by SDS-PAGE and Coomassie blue staining
Concentration:	>0.05 µg/µL as determined by microplate BCA method
Labeling Method:	Labeled with [U- 13C6, 15N4]-L-Arginine and [U- 13C6, 15N2]-L-Lysine
Buffer:	25 mM Tris-HCl, 100 mM glycine, pH 7.3
Storage:	Store at -80°C. Avoid repeated freeze-thaw cycles.
Stability:	Stable for 3 months from receipt of products under proper storage and handling conditions.
RefSeq:	NP_981956
RefSeq Size:	887
RefSeq ORF:	477
Locus ID:	92162
UniProt ID:	Q6PEY1
Cytogenetics:	17p13.1

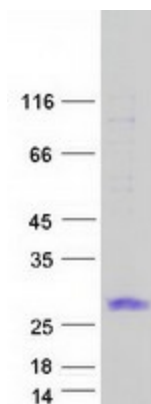


[View online »](#)

Summary: Inhibits the Wnt/beta-catenin signaling pathway. Crucial for heart development and acts downstream of GATA factors in the pre-cardiac mesoderm to specify lineage commitment of cardiomyocyte development.[UniProtKB/Swiss-Prot Function]

Protein Families: Transmembrane

Product images:



Coomassie blue staining of purified TMEM88 protein (Cat# [TP309280]). The protein was produced from HEK293T cells transfected with TMEM88 cDNA clone (Cat# [RC209280]) using MegaTran 2.0 (Cat# [TT210002]).