

## Product datasheet for PH309279

### TUBA3E (NM\_207312) Human Mass Spec Standard

#### Product data:

Product Type:	Mass Spec Standards
Description:	TUBA3E MS Standard C13 and N15-labeled recombinant protein (NP_997195)
Species:	Human
Expression Host:	HEK293
Expression cDNA Clone or AA Sequence:	RC209279
Predicted MW:	49.9 kDa
Protein Sequence:	>RC209279 protein sequence Red=Cloning site Green=Tags(s)

MRECISIHVGQAGVQIGNACWELYLEHGIQPDGQMPSPDKTIGGGDDSFNTFFSETGAGKHVPRAVFVDL  
EPTVVDEVRTGTYRQLFHPEQLITGKEDAASNYARGHYTIGKEIVDLVLDRIKRLADLCTGLQGFLIFHS  
FGGGTGSGFASLLMERLSVDYSKSKLEFAIYPAPQVSTAVVEPYNSILTTHTTLEHSDCAFVMDNEAIY  
DICRRNLDIERPTYTNLNLIGQIVSSITASLRFDGALNVDLTFEQTNLVPYPRIHFPLATYAPVISA EK  
AYHEQLSVAEITNACFEPANQMVKCDPRHGKYMCCMLYRGDVVPKDVNAAIATIKTKRTIQFVDWCPTG  
FKVGINYQPPTVVPGGDLAKVQRAVCMLSNNTTAAEAWARLVHKFDL MYAKWAFVHWYVGEEMEEGEFSE  
AREDLAALAEKDCEEVGDSVEAEAEEGEEY

TRTRPLEQKLI SEEDLAANDILDYKDDDDKV

Tag:	C-Myc/DDK
Purity:	> 80% as determined by SDS-PAGE and Coomassie blue staining
Concentration:	>0.05 µg/µL as determined by microplate BCA method
Labeling Method:	Labeled with [U- <sup>13</sup> C <sub>6</sub> , <sup>15</sup> N <sub>4</sub> ]-L-Arginine and [U- <sup>13</sup> C <sub>6</sub> , <sup>15</sup> N <sub>2</sub> ]-L-Lysine
Buffer:	25 mM Tris-HCl, 100 mM glycine, pH 7.3
Storage:	Store at -80°C. Avoid repeated freeze-thaw cycles.
Stability:	Stable for 3 months from receipt of products under proper storage and handling conditions.
RefSeq:	<u>NP_997195</u>
RefSeq Size:	1554
RefSeq ORF:	1350
Locus ID:	112714



[View online »](#)

UniProt ID: [Q6PEY2](#)

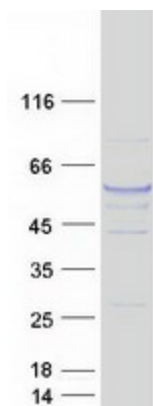
Cytogenetics: 2q21.1

**Summary:** Microtubules of the eukaryotic cytoskeleton perform essential and diverse functions and are composed of a heterodimer of alpha and beta tubulin. The genes encoding these microtubule constituents are part of the tubulin superfamily, which is composed of six distinct families. Genes from the alpha, beta and gamma tubulin families are found in all eukaryotes. The alpha and beta tubulins represent the major components of microtubules, while gamma tubulin plays a critical role in the nucleation of microtubule assembly. This gene encodes an alpha tubulin that highly conserved among species. A missense mutation in this gene has been potentially linked to microlissencephaly and global developmental delay. [provided by RefSeq, Jul 2016]

**Protein Families:** Druggable Genome

**Protein Pathways:** Gap junction, Pathogenic Escherichia coli infection

### Product images:



Coomassie blue staining of purified TUBA3E protein (Cat# [TP309279]). The protein was produced from HEK293T cells transfected with TUBA3E cDNA clone (Cat# [RC209279]) using MegaTran 2.0 (Cat# [TT210002]).