

## Product datasheet for PH309276

### TUBA3D (NM\_080386) Human Mass Spec Standard

#### Product data:

Product Type:	Mass Spec Standards
Description:	TUBA3D MS Standard C13 and N15-labeled recombinant protein (NP_525125)
Species:	Human
Expression Host:	HEK293
Expression cDNA Clone or AA Sequence:	RC209276
Predicted MW:	50 kDa
Protein Sequence:	>RC209276 protein sequence Red=Cloning site Green=Tags(s)

MRECISIHVGQAGVQIGNACWELYLEHGIQPDGQMPDSTIGGGDSFNFTFFSETGAGKHVPRAVFVDL  
EPTVVDEVRTGTYRQLFHPEQLITGKEDAANNYARGHYTIGKEIVDLVLDRIKRLADLCTGLQGFLIFHS  
FGGGTGSGFASLLMERLSVDYGGKSKLEFAIYPAPQVSTAVVEPYNSILTTHTTLEHSDCAFVMDNEAIY  
DICRRNLDIERPTYTNLNLIGQIVSSITASLRFDGALNVDLTFEQTNLVPYPRIHFPLATYAPVISA EK  
AYHEQLSVAEITNACFEPANQMVKYDPRHGKYMCCMLYRGDVVPKDVNAAIATIKTKRTIQFVDWCPTG  
FKVGINYQPPTVVPGGDLAKVQRAVCMLSNNTTAAEAWARLDHKFDL MYAKRAVHVHVVYVGEEMEEGFSE  
AREDLAALAEKDYEEVGVDSVEAEAEEGEEY

TRTRPLEQKLI SEEDLAANDILDYKDDDDKV

Tag:	C-Myc/DDK
Purity:	> 80% as determined by SDS-PAGE and Coomassie blue staining
Concentration:	>0.05 µg/µL as determined by microplate BCA method
Labeling Method:	Labeled with [U- <sup>13</sup> C <sub>6</sub> , <sup>15</sup> N <sub>4</sub> ]-L-Arginine and [U- <sup>13</sup> C <sub>6</sub> , <sup>15</sup> N <sub>2</sub> ]-L-Lysine
Buffer:	25 mM Tris-HCl, 100 mM glycine, pH 7.3
Storage:	Store at -80°C. Avoid repeated freeze-thaw cycles.
Stability:	Stable for 3 months from receipt of products under proper storage and handling conditions.
RefSeq:	<a href="#">NP_525125</a>
RefSeq Size:	1646
RefSeq ORF:	1350
Synonyms:	H2-ALPHA; KTCN9; TUBA2



[View online »](#)

Locus ID: 113457

UniProt ID: [Q13748](#), [P0DPH7](#), [P0DPH8](#), [Q1ZYQ1](#)

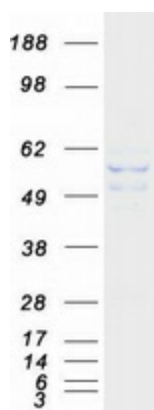
Cytogenetics: 2q21.1

**Summary:** This gene encodes a member of the alpha tubulin family. Tubulin is a major component of microtubules, which are composed of alpha- and beta-tubulin heterodimers and microtubule-associated proteins in the cytoskeleton. Microtubules maintain cellular structure, function in intracellular transport, and play a role in spindle formation during mitosis. [provided by RefSeq, Oct 2011]

**Protein Families:** Druggable Genome

**Protein Pathways:** Gap junction, Pathogenic Escherichia coli infection

### Product images:



Coomassie blue staining of purified TUBA3D protein (Cat# [TP309276]). The protein was produced from HEK293T cells transfected with TUBA3D cDNA clone (Cat# [RC209276]) using MegaTran 2.0 (Cat# [TT210002]).