

Product datasheet for PH309273

Cullin 5 (CUL5) (NM_003478) Human Mass Spec Standard

Product data:

Product Type:	Mass Spec Standards
Description:	CUL5 MS Standard C13 and N15-labeled recombinant protein (NP_003469)
Species:	Human
Expression Host:	HEK293
Expression cDNA Clone or AA Sequence:	RC209273
Predicted MW:	91 kDa
Protein Sequence:	>RC209273 protein sequence Red=Cloning site Green=Tags(s)

MATSNLLKNKGSQFEDKWFMRPIVLKLLRQESVTKQQWFDLFSVDHAVCLWDDKGPAAIHQALKEDIL
EFIKQAQARVLSHQDDTALLKAYIVEWRKFFTQCDILPKPFCQLEITLMGKQGSNKKSNVEDSIVRKLML
DTWNEISFSNIKNRLQDSAMKLVHAERLGEAFDSQLVIGVRESYVNLCSNPEDKLIYRDNFEKAYLDST
ERFYRTQAPSYLQQNGVQNYMKYADAKLKEEKRALRYLETRRECNSVEALMECCVNALVTSFKETILAE
CQGMIKRNETEKLHLMFSLMDKVPNGIEPMLKDLEEHIIISAGLADMVAAAETITTDSEKYVEQLLTLFNR
FSKLVKEAFQDDPRFLTARDKAYKAVVNDATIFKLELPLKQKGVGLKTQPESKPELLANYCDMLLRKTP
LSKKLTSEEIEAKLKEVLLVLKYVQNKDVMRYHKAHLTRRLILDISADSEIEENMVWELREVGMPADYV
NKLARMFQDIKVEDLNQAFKEMHKNNKLALPADSVNIKILNAGAWSRSSEKVFVSLPTELEDLIPVEVE
FYKKNHSGRKLHWHHLSNGIITFKNEVGQYDLEVTTFLAVLFAWNQRPREKISFENLKLATELPDAEL
RRTLWLSLVAFPKLKRQVLLYEPQVNSPKDFTEGTLFSVNQEFSLIKNAKVQKRGKINLIGRLQLTTERMR
EEENEGIVQLRILRTQEAIIQIMKMRKISNAQLQTELVEILKNMFLPQKKMIKEQIEWLIEHKYIRRDE
SDINTFIYMA

TRTRPLEQKLISEEDLAANDILDYKDDDDKV

Tag:	C-Myc/DDK
Purity:	> 80% as determined by SDS-PAGE and Coomassie blue staining
Concentration:	>0.05 µg/µL as determined by microplate BCA method
Labeling Method:	Labeled with [U- ¹³ C ₆ , ¹⁵ N ₄]-L-Arginine and [U- ¹³ C ₆ , ¹⁵ N ₂]-L-Lysine
Buffer:	25 mM Tris-HCl, 100 mM glycine, pH 7.3
Storage:	Store at -80°C. Avoid repeated freeze-thaw cycles.
Stability:	Stable for 3 months from receipt of products under proper storage and handling conditions.
RefSeq:	NP_003469



[View online »](#)

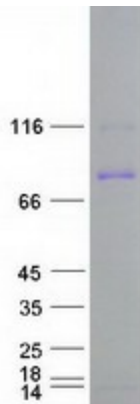
RefSeq Size:	6408
RefSeq ORF:	2340
Synonyms:	CUL-5; VACM-1; VACM1
Locus ID:	8065
UniProt ID:	Q93034
Cytogenetics:	11q22.3

Summary: Core component of multiple SCF-like ECS (Elongin-Cullin 2/5-SOCS-box protein) E3 ubiquitin-protein ligase complexes, which mediate the ubiquitination and subsequent proteasomal degradation of target proteins. As a scaffold protein may contribute to catalysis through positioning of the substrate and the ubiquitin-conjugating enzyme. The functional specificity of the E3 ubiquitin-protein ligase complex depends on the variable substrate recognition component. ECS(SOCS1) seems to direct ubiquitination of JAK2. Seems to be involved in proteasomal degradation of p53/TP53 stimulated by adenovirus E1B-55 kDa protein. May form a cell surface vasopressin receptor.[UniProtKB/Swiss-Prot Function]

Protein Families: Druggable Genome

Protein Pathways: Ubiquitin mediated proteolysis

Product images:



Coomassie blue staining of purified CUL5 protein (Cat# [TP309273]). The protein was produced from HEK293T cells transfected with CUL5 cDNA clone (Cat# [RC209273]) using MegaTran 2.0 (Cat# [TT210002]).