

## Product datasheet for PH309272

### Factor D (CFD) (NM\_001928) Human Mass Spec Standard

#### Product data:

Product Type:	Mass Spec Standards
Description:	CFD MS Standard C13 and N15-labeled recombinant protein (NP_001919)
Species:	Human
Expression Host:	HEK293
Expression cDNA Clone or AA Sequence:	RC209272
Predicted MW:	27 kDa
Protein Sequence:	>RC209272 protein sequence <b>Red</b> =Cloning site <b>Green</b> =Tags(s)  MHSWERLAVLVLLGAAACAAPPRGRILGGREAEAHARPYMASVQLNGAHL CGGVLVAEQWVLSAAHCLED AADGKVQVLLGAHLSQPEPSKRLYDVLRAVPHPSQPDIDHDLLLLQLSEKATLGPAVRPLPWQRVDR DVAPGTLCDVAGWGI VNHAGRRPDSLQHVLLPVLD RATCNRRTHHDG AITERLMCAESNRRD SCKGDSGG PLVCGGVLEGVVTS GSRVCGNRKKPGIYTRVASYAAWIDSVLA  <b>TRTRPLEQKLI SEEDLAANDILDYKDDDDKV</b>
Tag:	C-Myc/DDK
Purity:	> 80% as determined by SDS-PAGE and Coomassie blue staining
Concentration:	>0.05 µg/µL as determined by microplate BCA method
Labeling Method:	Labeled with [U- <sup>13</sup> C <sub>6</sub> , <sup>15</sup> N <sub>4</sub> ]-L-Arginine and [U- <sup>13</sup> C <sub>6</sub> , <sup>15</sup> N <sub>2</sub> ]-L-Lysine
Buffer:	25 mM Tris-HCl, 100 mM glycine, pH 7.3
Storage:	Store at -80°C. Avoid repeated freeze-thaw cycles.
Stability:	Stable for 3 months from receipt of products under proper storage and handling conditions.
RefSeq:	<a href="#">NP_001919</a>
RefSeq Size:	1173
RefSeq ORF:	759
Synonyms:	ADIPSIN; ADN; DF; PFD
Locus ID:	1675
UniProt ID:	<a href="#">P00746</a>



[View online »](#)

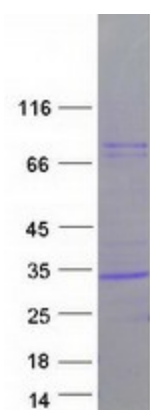
**Cytogenetics:** 19p13.3

**Summary:** This gene encodes a member of the S1, or chymotrypsin, family of serine peptidases. This protease catalyzes the cleavage of factor B, the rate-limiting step of the alternative pathway of complement activation. This protein also functions as an adipokine, a cell signaling protein secreted by adipocytes, which regulates insulin secretion in mice. Mutations in this gene underlie complement factor D deficiency, which is associated with recurrent bacterial meningitis infections in human patients. Alternative splicing of this gene results in multiple transcript variants. At least one of these variants encodes a preproprotein that is proteolytically processed to generate the mature protease. [provided by RefSeq, Nov 2015]

**Protein Families:** Druggable Genome, Protease, Secreted Protein

**Protein Pathways:** Complement and coagulation cascades

### Product images:



Coomassie blue staining of purified CFD protein (Cat# [TP309272]). The protein was produced from HEK293T cells transfected with CFD cDNA clone (Cat# [RC209272]) using MegaTran 2.0 (Cat# [TT210002]).