

Product datasheet for PH309259

Leptin (LEP) (NM_000230) Human Mass Spec Standard

Product data:

Product Type:	Mass Spec Standards
Description:	LEP MS Standard C13 and N15-labeled recombinant protein (NP_000221)
Species:	Human
Expression Host:	HEK293
Expression cDNA Clone or AA Sequence:	RC209259
Predicted MW:	18.6 kDa
Protein Sequence:	>RC209259 protein sequence Red=Cloning site Green=Tags(s) MHWGTLCGFLWLWPYLFYVQAVPIQKVQDDTKLIKTIVTRINDISHTQSVSSKQKVTGLDFIPGLHPIL TLKMDQTLAVYQQILTSMPSRNVIQISNDLENLRDLLHVLAFAFSKSchLPWASGLETLDSLGGVLEASGY STEVVALSRLQGSLQDMLWQLDLSPGC TRTRPLEQKLI SEEDLAANDILDYKDDDDKV
Tag:	C-Myc/DDK
Purity:	> 80% as determined by SDS-PAGE and Coomassie blue staining
Concentration:	>0.05 µg/µL as determined by microplate BCA method
Labeling Method:	Labeled with [U- 13C6, 15N4]-L-Arginine and [U- 13C6, 15N2]-L-Lysine
Buffer:	25 mM Tris-HCl, 100 mM glycine, pH 7.3
Storage:	Store at -80°C. Avoid repeated freeze-thaw cycles.
Stability:	Stable for 3 months from receipt of products under proper storage and handling conditions.
RefSeq:	NP_000221
RefSeq Size:	3444
RefSeq ORF:	501
Synonyms:	LEPD; OB; OBS
Locus ID:	3952
UniProt ID:	P41159 , A4D0Y8



[View online »](#)

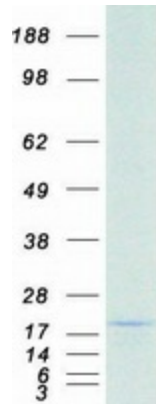
Cytogenetics: 7q32.1

Summary: This gene encodes a protein that is secreted by white adipocytes into the circulation and plays a major role in the regulation of energy homeostasis. Circulating leptin binds to the leptin receptor in the brain, which activates downstream signaling pathways that inhibit feeding and promote energy expenditure. This protein also has several endocrine functions, and is involved in the regulation of immune and inflammatory responses, hematopoiesis, angiogenesis, reproduction, bone formation and wound healing. Mutations in this gene and its regulatory regions cause severe obesity and morbid obesity with hypogonadism in human patients. A mutation in this gene has also been linked to type 2 diabetes mellitus development. [provided by RefSeq, Aug 2017]

Protein Families: Druggable Genome, Secreted Protein

Protein Pathways: Adipocytokine signaling pathway, Cytokine-cytokine receptor interaction, Jak-STAT signaling pathway, Neuroactive ligand-receptor interaction

Product images:



Coomassie blue staining of purified LEP protein (Cat# [TP309259]). The protein was produced from HEK293T cells transfected with LEP cDNA clone (Cat# [RC209259]) using MegaTran 2.0 (Cat# [TT210002]).